

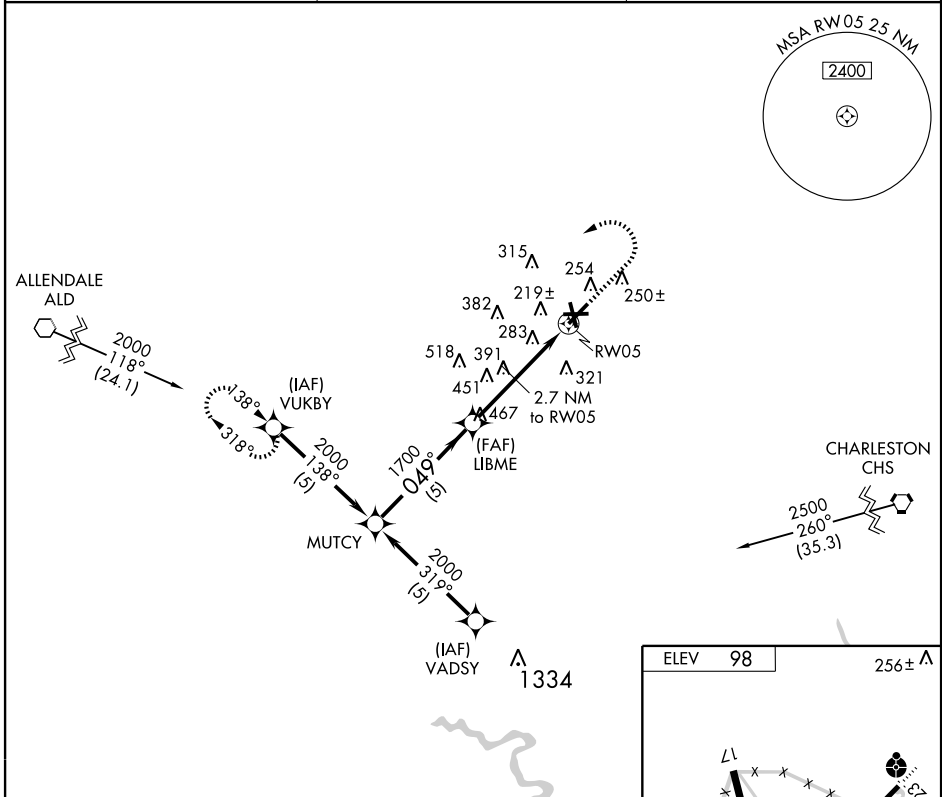
GPS RWY 5

WALTERBORO/LOWCOUNTRY RGNL (R.B.W)

APP CRS	Rwy Idg	6002
049°	TDZE	96
	Apt Elev	98

<p>▽ Visibility reduction by helicopters NA.</p> <p>▲ NA</p>	<p>MISSED APPROACH: Climb to 1000 then climbing left turn to 2000 direct VUKBY WP and hold.</p>
--	---

<p>AWOS-3</p> <p>118.725 221</p>	<p>CHARLESTON APP CON</p> <p>120.7 306.925</p>	<p>UNICOM</p> <p>122.8 (CTAF) ①</p>
---	---	--



SE-2, 22 OCT 2009 to 19 NOV 2009

SE-2, 22 OCT 2009 to 19 NOV 2009

