

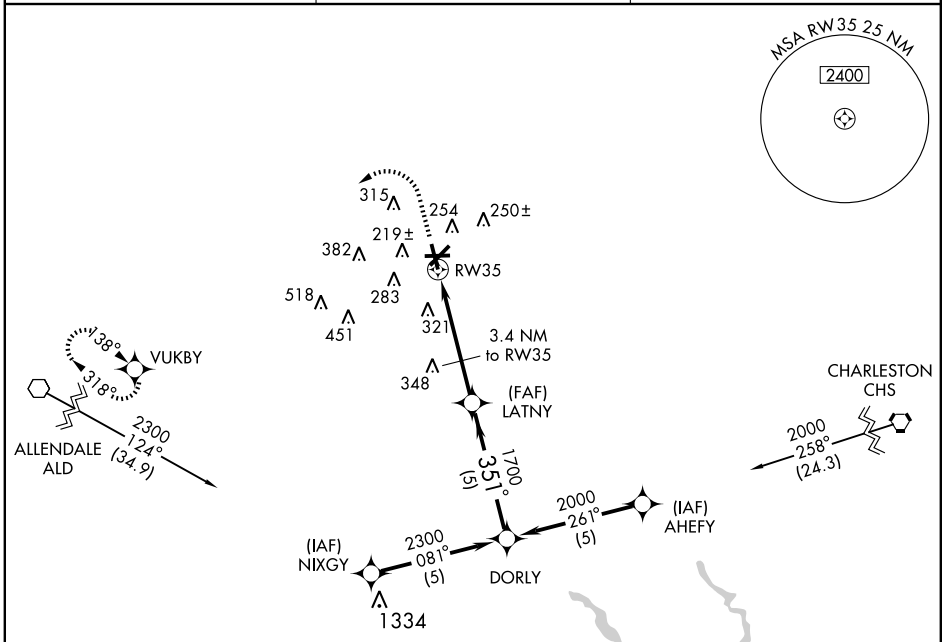
GPS RWY 35

WALTERBORO/LOWCOUNTRY RGNL (R.B.W)

APP CRS 351°	Rwy Idg 5705
	TDZE 95
	Apt Elev 98

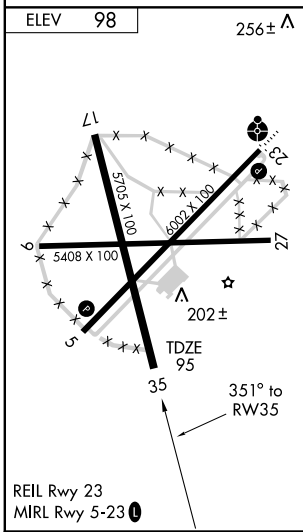
<p>NA Procedure not authorized at night. Visibility reduction by helicopters NA.</p>	<p>MISSED APPROACH: Climb to 1000 then climbing left turn to 2000 direct VUKBY WP and hold.</p>
---	---

AWOS-3 118.725 221	CHARLESTON APP CON 120.7 306.925	UNICOM 122.8 (CTAF) 0
------------------------------	--	---------------------------------



SE-2, 22 OCT 2009 to 19 NOV 2009

SE-2, 22 OCT 2009 to 19 NOV 2009



ELEV 98	256±			
1000	2000	VUKBY		
RW35		LATNY	DORLY	
4.9 NM		5 NM		
CATEGORY	A	B	C	D
S-35	560-1	465 (400-1)	560-1¼ 465 (400-1¼)	560-1½ 465 (400-1½)
CIRCLING	620-1	522 (600-1)	640-1½ 542 (600-1½)	680-2 582 (600-2)