

# GPS RWY 17

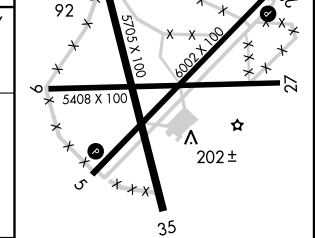
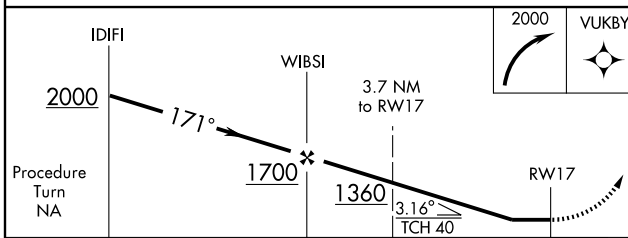
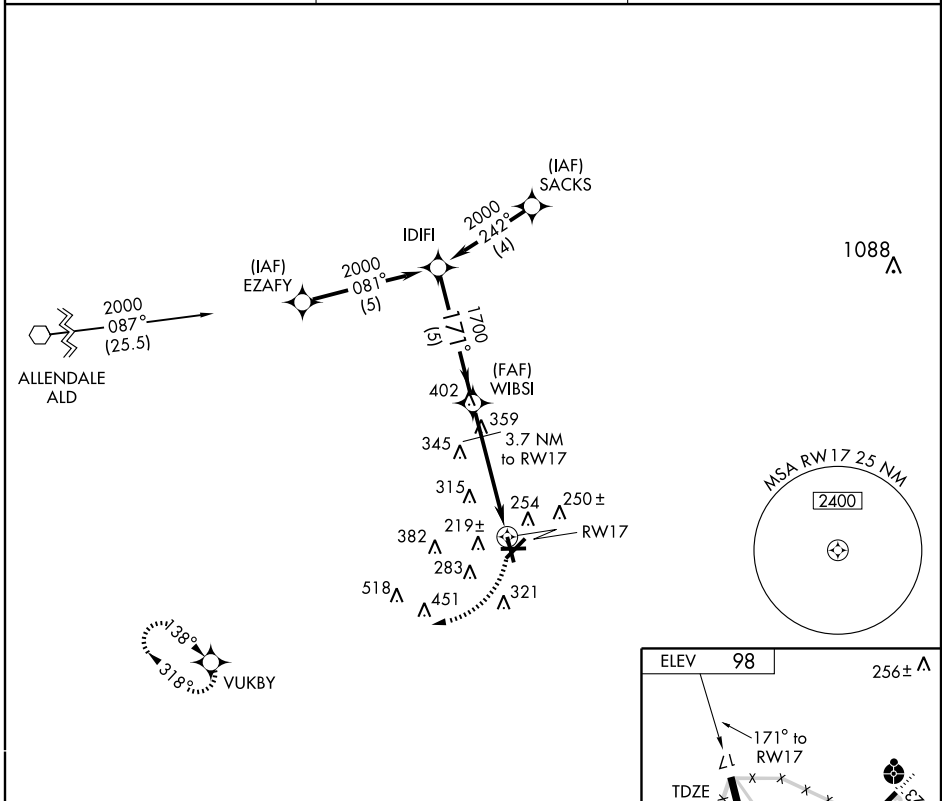
WALTERBORO/LOWCOUNTRY RGNL (RBW)

APP CRS <b>171°</b>	Rwy Idg <b>5705</b>
	TDZE <b>92</b>
	Apt Elev <b>98</b>

Procedure not authorized at night.  
Visibility reduction by helicopters NA.

MISSED APPROACH: Climbing right turn to 2000 direct VUKBY WP and hold.

AWOS-3 <b>118.725 221</b>	CHARLESTON APP CON <b>120.7 306.925</b>	UNICOM <b>122.8 (CTAF) 0</b>
------------------------------	--	---------------------------------



CATEGORY	A	B	C	D
S-17	520-1 428 (500-1)		520-1½ 428 (500-1¼)	520-1½ 428 (500-1½)
CIRCLING	620-1 522 (600-1)		640-1½ 542 (600-1½)	680-2 582 (600-2)

# GPS RWY 17

SE-2, 22 OCT 2009 to 19 NOV 2009

SE-2, 22 OCT 2009 to 19 NOV 2009