

COLBY, KANSAS

AL-5749 (FAA)

RNAV (GPS) RWY 35

COLBY/SHALZ FIELD (CBK)

WAAS CH 81909 W35A	APP CRS 352°	Rwy Idg TDZE Apt Elev	5110 3175 3187
---------------------------------	------------------------	-----------------------------	---

⚠ For uncompensated Baro-VNAV systems, LNAV/VNAV NA below -21°C (-5°F) or above 54°C (130°F). DME/DME RNP-0.3 NA. Baro-VNAV and VDP NA when using Goodland altimeter setting. When local altimeter setting not received, use Goodland altimeter setting and increase all DA 136 feet, and all MDA 140 feet, increase LPV and LNAV/VNAV visibility all Cats ½ mile and LNAV Cat C visibility ½ mile.

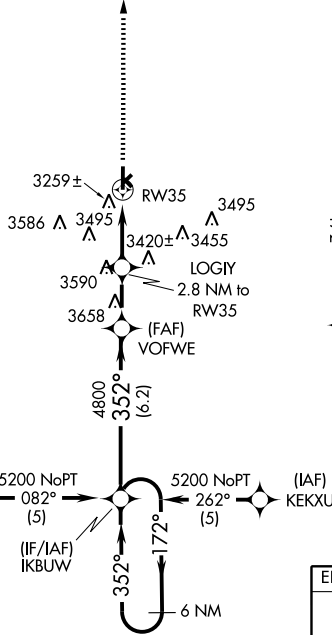
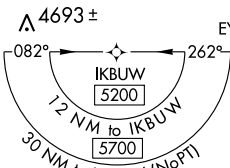
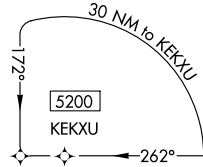
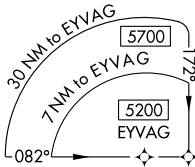
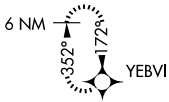
MISSED APPROACH: Climb to 5100 direct YEBVI and hold.

AWOS-3
118.175

DENVER CENTER
132.5 379.15

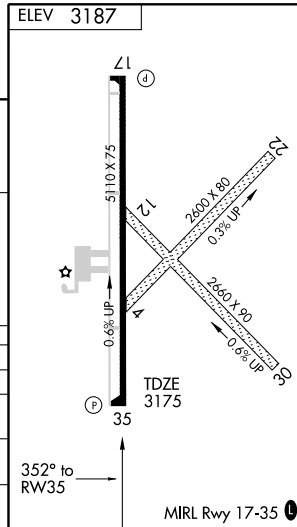
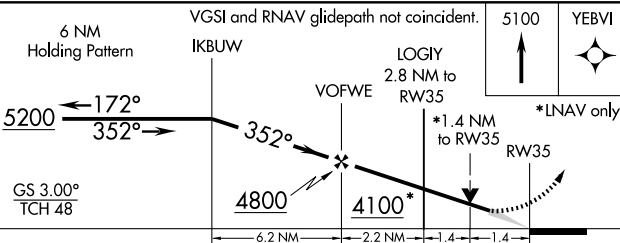
UNICOM
122.8 (CTAF)

MISSED APCH FIX



NC-2, 22 OCT 2009 to 19 NOV 2009

NC-2, 22 OCT 2009 to 19 NOV 2009



CATEGORY	A	B	C	D
LPV DA	3425-1 250 (300-1)			NA
LNAV/VNAV DA	3554-1½ 379 (400-1½)			NA
LNAV MDA	3640-1	465 (500-1)	3640-1¼ 465 (500-1¼)	NA
CIRCLING	3640-1	453 (500-1)	3640-1½ 453 (500-1½)	NA

COLBY, KANSAS
Amdt 1 08269

39°26'N-101°03'W

RNAV (GPS) RWY 35

MIRL Rwy 17-35