

WAAS CH 93509 W30A	APP CRS 305°	Rwy ldg 4699 TDZE 3387 Apt Elev 3394
--	------------------------	---

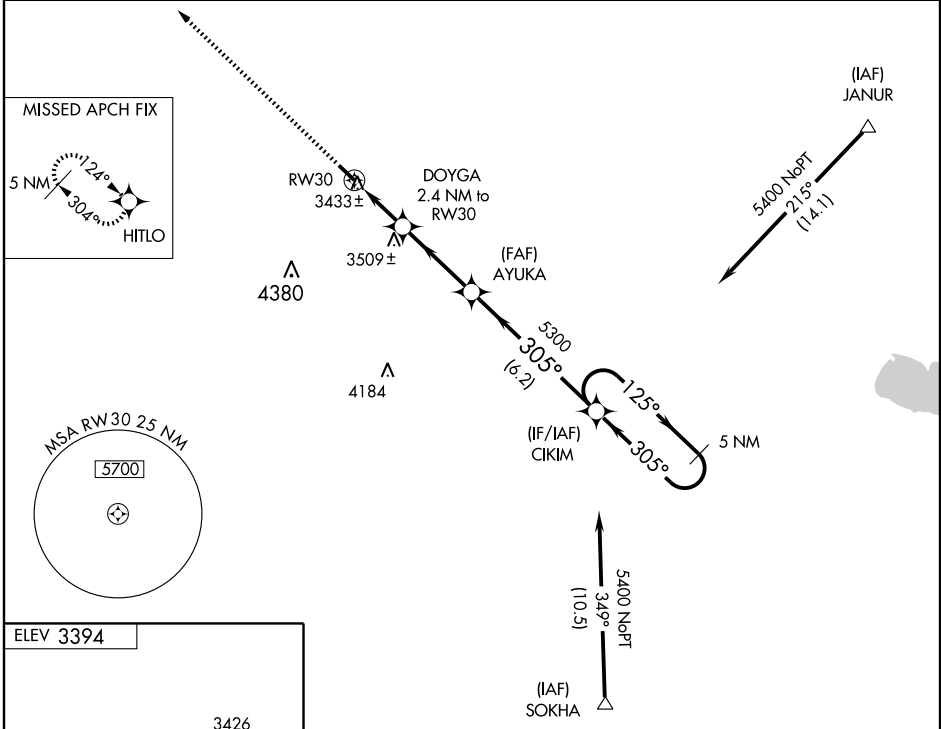
RNAV (GPS) RWY 30

OSHKOSH/GARDEN COUNTY (OKS)

NA Baro-VNAV NA. DME/DME RNP-0.3 NA. Visibility reduction by helicopters NA. Use Ogallala altimeter setting; when not received, use Sidney altimeter setting and increase all DA 118 feet and all MDA 120 feet. Increase LPV and LNAV/VNAV visibility all Cats ½ mile.

MISSED APPROACH: Climb to 5700 direct HITLO and hold.

OGALLALA AWOS-3 121.275	DENVER CENTER 118.475 225.4	UNICOM 122.8 (CTAF)
-----------------------------------	---------------------------------------	-------------------------------



NC-2, 22 OCT 2009 to 19 NOV 2009

NC-2, 22 OCT 2009 to 19 NOV 2009

5700	HITLO	* LNAV only.	CIKIM	5 NM Holding Pattern
↑	✧		DOYGA 2.4 NM to RW30	AYUKA
			RW30	305°
			*4180	5300
			2.4 NM	3.4 NM
			6.2 NM	5400
			125°	305°
				GS 3.00° TCH 40
CATEGORY	A	B	C	D
LPV DA	3734-1¼	347 (400-1¼)		NA
LNAV/VNAV DA	3792-1½	405 (400-1½)		NA
LNAV MDA	3880-1	493 (500-1)		NA
CIRCLING	3940-1	3980-1		NA
	546 (600-1)	586 (600-1)		