

# RNAV (GPS) RWY 12

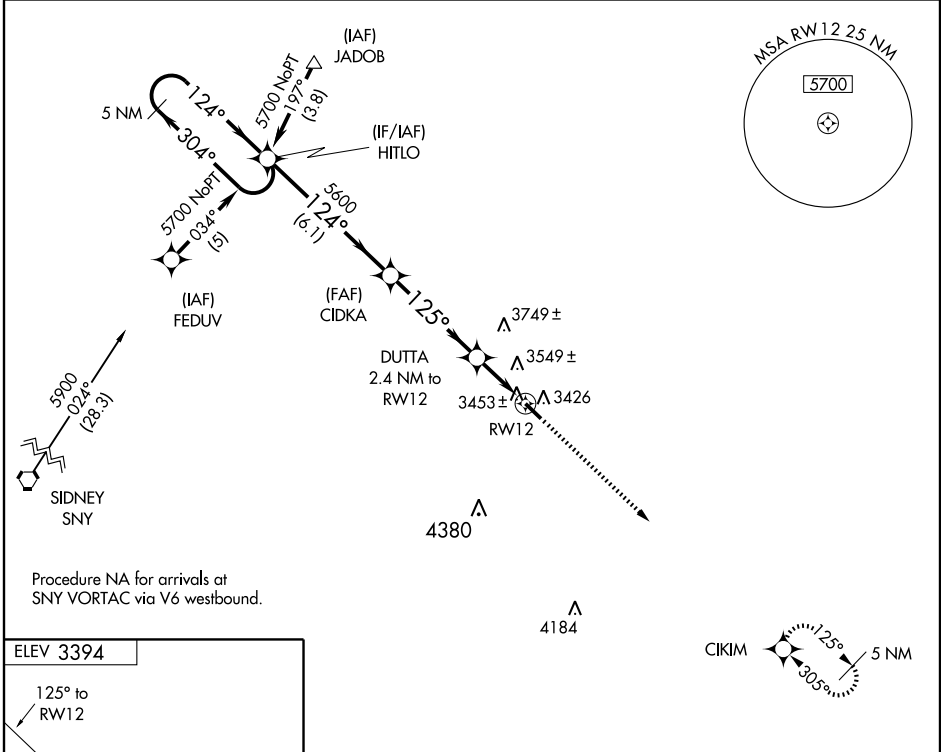
OSHKOSH/GARDEN COUNTY (OKS)

WAAS CH <b>99708</b> <b>W12A</b>	APP CRS <b>125°</b>	Rwy Idg <b>4699</b> TDZE <b>3394</b> Apt Elev <b>3394</b>
--	------------------------	---

**Baro-VNAV NA.** DME/DME RNP-0.3 NA. Visibility reduction by helicopters NA. Use Ogallala altimeter setting; when not received, use Sidney altimeter setting and increase all DA 118 feet and all MDA 120 feet. Increase LPV and LNAV/VNAV visibility all Cats ½ mile.

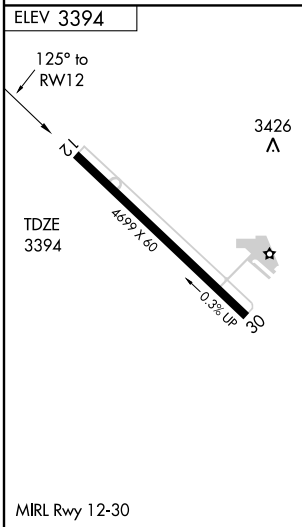
**MISSED APPROACH:** Climb to 5400 direct CIKIM and hold.

OGALLALA AWOS-3 <b>121.275</b>	DENVER CENTER <b>118.475 225.4</b>	UNICOM <b>122.8</b> (CTAF)
-----------------------------------	---------------------------------------	-------------------------------



NC-2, 22 OCT 2009 to 19 NOV 2009

NC-2, 22 OCT 2009 to 19 NOV 2009



5 NM Holding Pattern		HITLO	*LNAV only		5400	CIKIM
5700		← 304°	→ 124°	124°	5600	125°
GS 3.00°				*4200		2.4 NM to RWY 12
TCH 40		6.1 NM		4.3 NM		2.4 NM
CATEGORY	A	B	C	D		
LPV DA	3762-1¼	368 (400-1¼)	NA			
LNAV/VNAV DA	3882-1¾	488 (500-1¾)	NA			
LNAV MDA	3860-1	466 (500-1)	NA			
CIRCLING	3940-1	3980-1				
	546 (600-1)	586 (600-1)				