

OSHKOSH, NEBRASKA

AL-5748 (FAA)

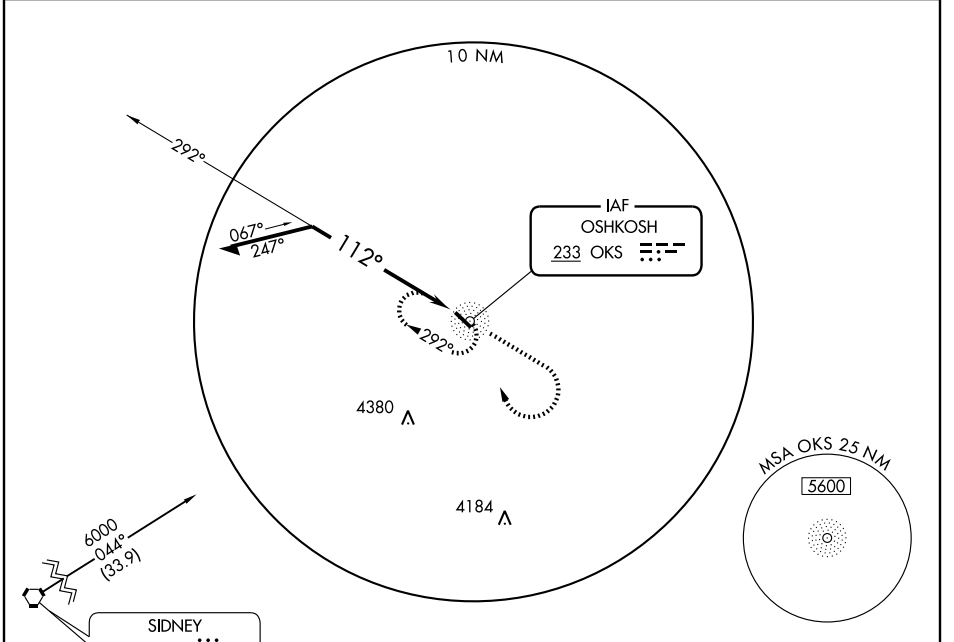
# NDB RWY 12

OSHKOSH/GARDEN COUNTY (OKS)

NDB OKS <b>233</b>	APP CRS <b>112°</b>	Rwy Idg TDZE Apt Elev	<b>4699</b> <b>3394</b> <b>3394</b>
-----------------------	------------------------	-----------------------------	---

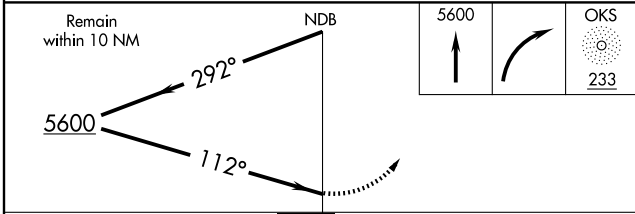
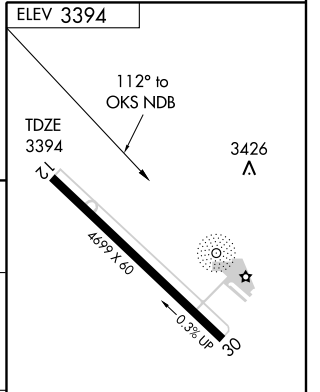
<b>▽</b> Use Ogallala altimeter setting; when not received <b>▲</b> NA use Sidney altimeter setting.	MISSED APPROACH: Climb to 5600, then right turn direct OKS NDB and hold.
---	--

OGALLALA AWOS-3 <b>121.275</b>	SIDNEY ASOS <b>118.025</b>	DENVER CENTER <b>118.475 225.4</b>	UNICOM <b>122.8</b> (CTAF)
-----------------------------------	-------------------------------	---------------------------------------	-------------------------------



NC-2, 22 OCT 2009 to 19 NOV 2009

NC-2, 22 OCT 2009 to 19 NOV 2009



CATEGORY	A	B	C	D
S-12	4600-1¼ 1206 (1300-1¼)	4600-1½ 1206 (1300-1½)		NA
CIRCLING	4600-1¼ 1206 (1300-1¼)	4600-1½ 1206 (1300-1½)		NA

MIRL Rwy 12-30

OSHKOSH, NEBRASKA  
Amdt 1B 09239

41° 24' N-102° 21' W

OSHKOSH/GARDEN COUNTY (OKS)  
**NDB RWY 12**