

# VOR RWY 15

WARRENTON-FAUQUIER (HWY)

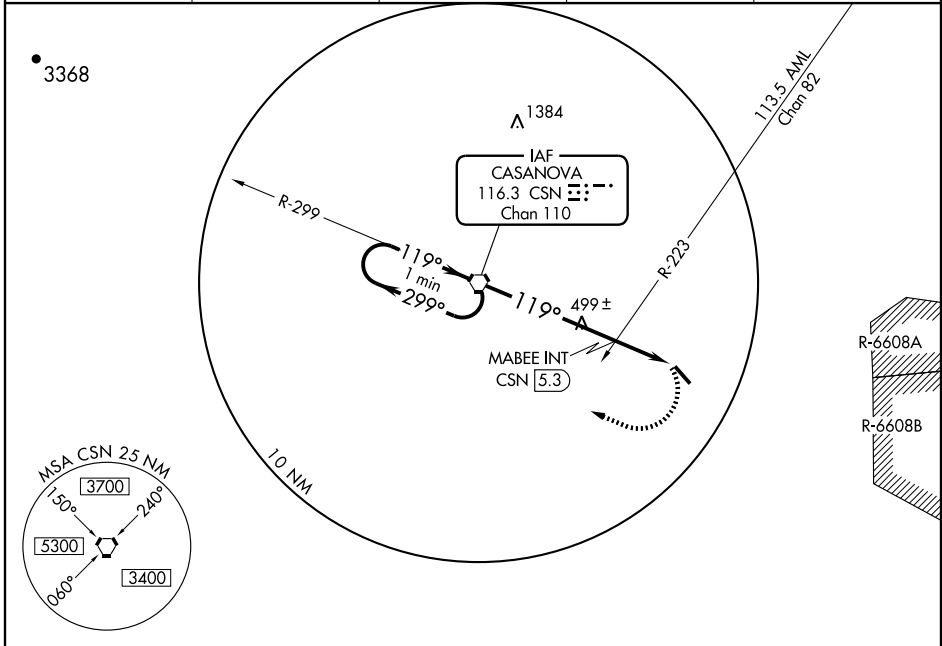
VORTAC CSN <b>116.3</b> Chan <b>110</b>	APP CRS <b>119°</b>	Rwy Idg TDZE <b>327</b> Apt Elev <b>337</b>
---	------------------------	---

**▽** Use Culpeper Rgnl altimeter setting, if not received, use Manassas Rgnl/Harry P Davis Field altimeter setting and increase all MDAs 40 feet.

**▲ NA**

MISSED APPROACH: Climbing right turn to 3000 direct to CSN VORTAC and hold.

ASOS <b>120.350</b>	CULPEPER AWOS-3 <b>119.325</b>	POTOMAC APP CON <b>124.65 306.925</b>	CLNC DEL(GCO) <b>135.075</b>	UNICOM <b>122.7</b> (CTAF) <b>①</b>
------------------------	-----------------------------------	--	---------------------------------	--



NE-3, 22 OCT 2009 to 19 NOV 2009

NE-3, 22 OCT 2009 to 19 NOV 2009

One Minute Holding Pattern	VORTAC	3000 CSN 116.3	ELEV 337		
2800 ← 299° 119° → 2800	MABEE INT CSN 5.3	119° 7.6 NM from FAF	☆ 370 ±		
* 1100 when using Manassas altimeter setting	3.01' ≥ TCH 40	CSN 7.6	TDZE 327		
	5.3 NM	2.3 NM	0.5% UP → 500 X 100		
CATEGORY	A	B	C	D	
S-15	1060-1	732 (800-1)	1060-2 732 (800-2)	1060-2¼ 732 (800-2¼)	
CIRCLING	1060-1	723 (800-1)	1060-2 723 (800-2)	1060-2¼ 723 (800-2¼)	
MABEE FIX MINIMUMS					
S-15	740-1	412 (500-1)	740-1¼	412 (500-1¼)	
CIRCLING	740-1 403 (500-1)	800-1 463 (500-1)	800-1½ 463 (500-1½)	900-2 563 (600-2)	
REIL Rwy 15 and 33 HIRL Rwy 15-33 ①					
FAF to MAP 7.6 NM					
Knots					
	60	90	120	150	180
Min:Sec					
	7:36	5:04	3:48	3:02	2:32