

# RNAV (GPS) RWY 15

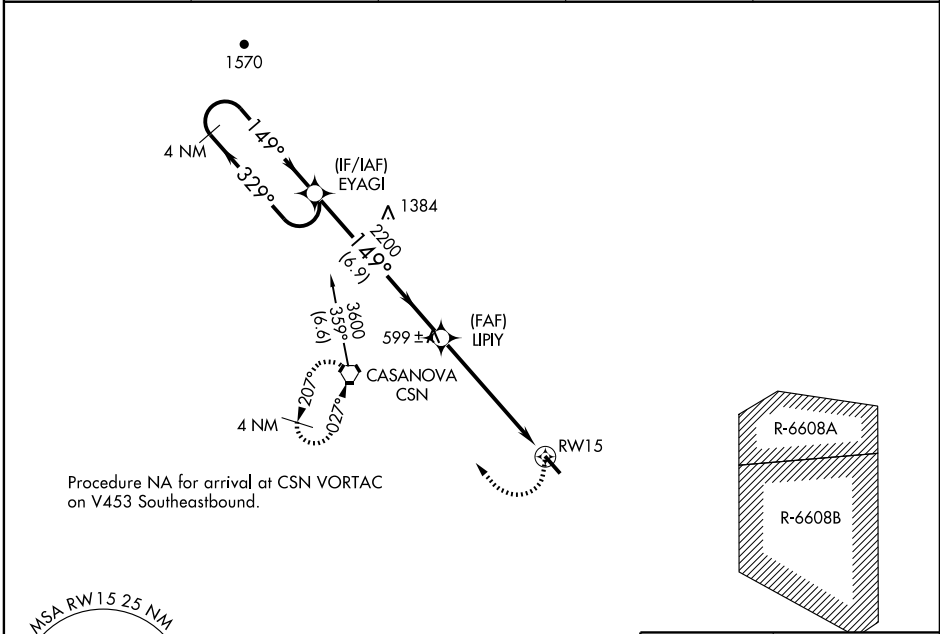
WARRENTON-FAUQUIER (HWY)

APP CRS	Rwy Idg	<b>5000</b>
<b>149°</b>	TDZE	<b>328</b>
	Apt Elev	<b>337</b>

**NA** DME/DME RNP-0.3 NA. Use Culpeper Rgnl altimeter setting, if not received, use Manassas Rgnl/Harry P Davis Field altimeter setting and increase all MDAs 40 feet.

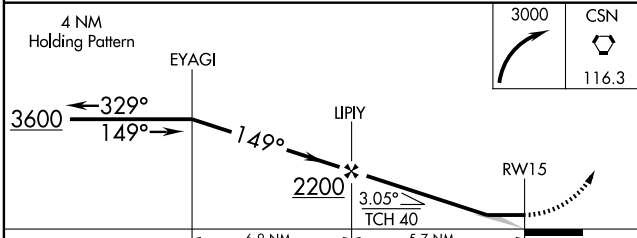
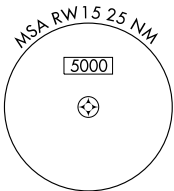
**MISSED APPROACH:** Climbing right turn to 3000 direct CSN VORTAC and hold.

ASOS <b>120.350</b>	CULPEPER AWOS-3 <b>119.325</b>	POTOMAC APP CON <b>124.65 306.925</b>	CLNC DEL (GCO) <b>135.075</b>	UNICOM <b>122.7 (CTAF) ①</b>
------------------------	-----------------------------------	--	----------------------------------	---------------------------------



NE-3, 22 OCT 2009 to 19 NOV 2009

NE-3, 22 OCT 2009 to 19 NOV 2009



CATEGORY	A	B	C	D
LNVA MDA	780-1	452 (500-1)	780-1¼ 452 (500-1¼)	780-1½ 452 (500-1½)
CIRCLING	780-1 443 (500-1)	800-1 463 (500-1)	800-1½ 463 (500-1½)	900-2 563 (600-2)

