

WOODSFIELD, OHIO

AL-5746 (FAA)

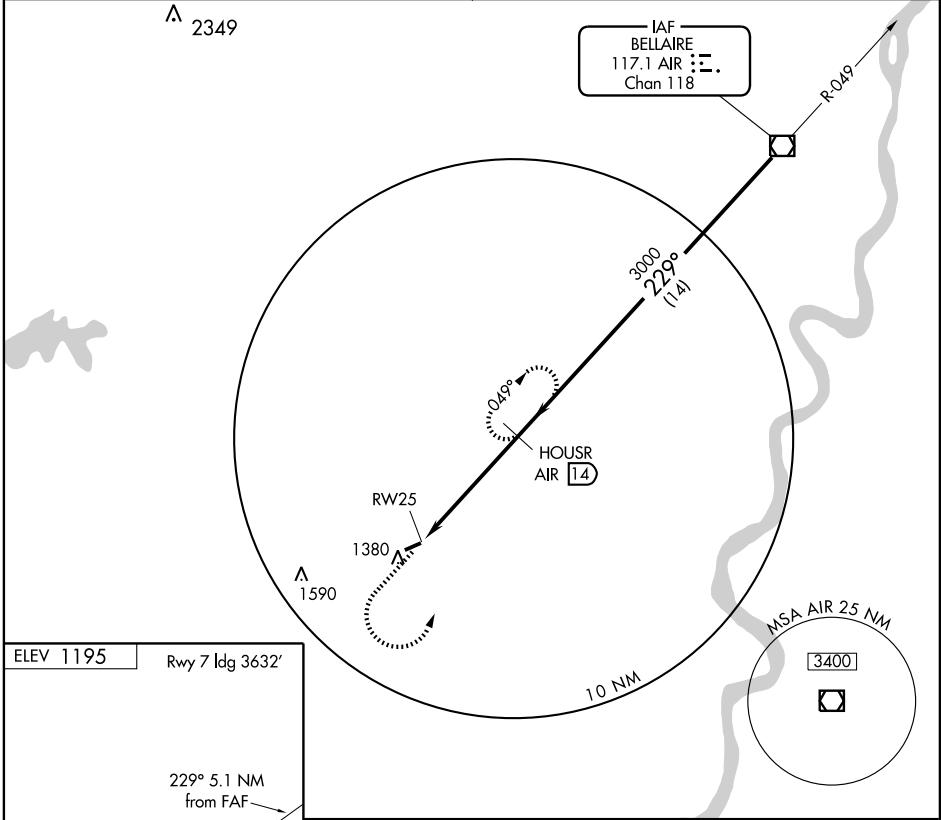
# VOR/DME or GPS RWY 25

WOODSFIELD/MONROE COUNTY (4G5)

VOR/DME AIR <b>117.1</b> Chan <b>118</b>	APP CRS <b>229°</b>	Rwy Idg <b>3805</b> TDZE <b>1195</b> Apt Elev <b>1195</b>
--	------------------------	--

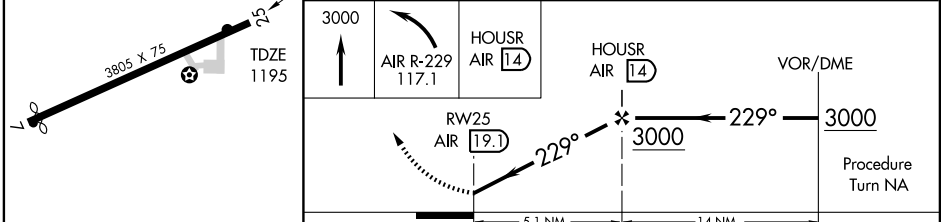
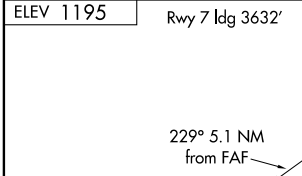
<p>▼ Use Parkersburg, WV altimeter setting.</p> <p>▲ NA</p>	<p>MISSED APPROACH: Climb to 3000 then left turn via AIR R-229 to HOUSR/14 DME and hold.</p>
---	--

<p>CLEVELAND CENTER <b>120.4 257.975</b></p>	<p>UNICOM <b>122.8</b> (CTAF) <b>1</b></p>
--	--



EC-2, 22 OCT 2009 to 19 NOV 2009

EC-2, 22 OCT 2009 to 19 NOV 2009



REIL RWY 25 <b>1</b>	MIRL RWY 7-25 <b>1</b>				
Knots	60	90	120	150	180
Min:Sec					
CATEGORY	A	B	C	D	
S-25	1820-1	625 (700-1)	1820-1¾ 625 (700-1¾)	NA	
CIRCLING	1880-1	685 (700-1)	1880-2 685 (700-2)	NA	

WOODSFIELD, OHIO  
Amdt 6 04274

39°47'N - 81°06'W

# VOR/DME or GPS RWY 25