

MONTICELLO, IOWA

AL-5745 (FAA)

# RNAV (GPS) RWY 15

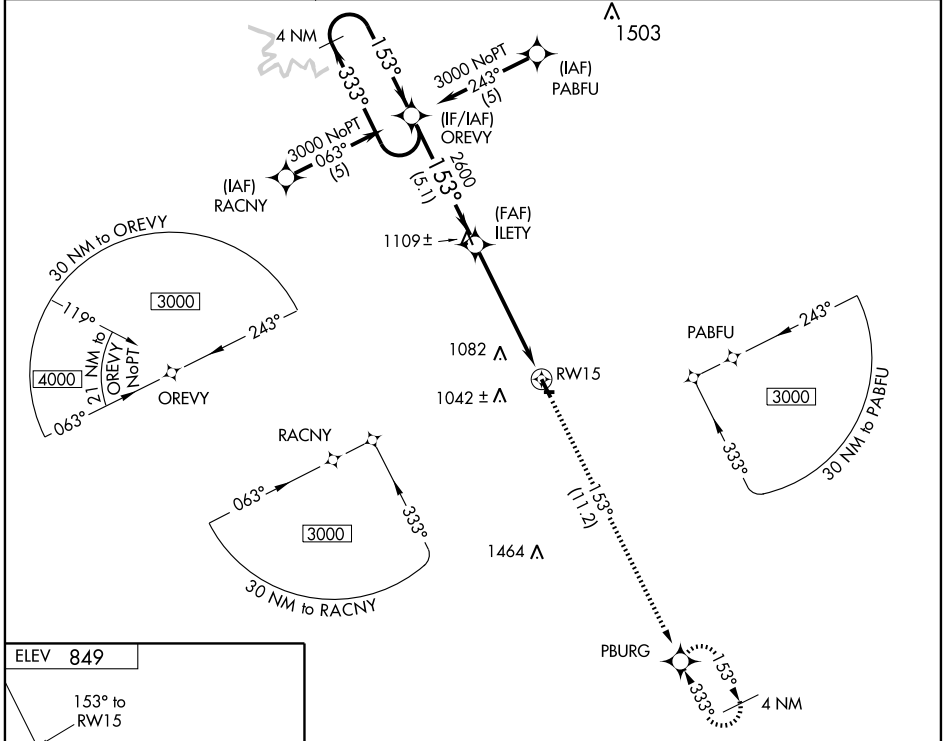
MONTICELLO RGNL (MXO)

APP CRS <b>153°</b>	Rwy Idg <b>4400</b>
	TDZE <b>827</b>
	Apt Elev <b>849</b>

**NA** GPS or RNP -0.3 required. DME/DME RNP -0.3 NA.  
Baro-VNAV NA below -16°C (4°F)

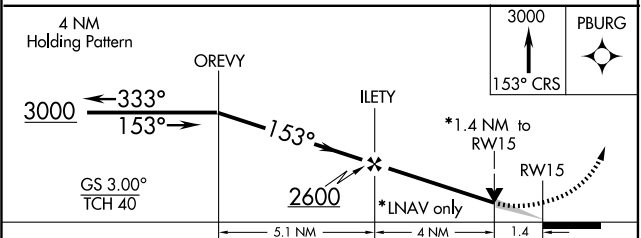
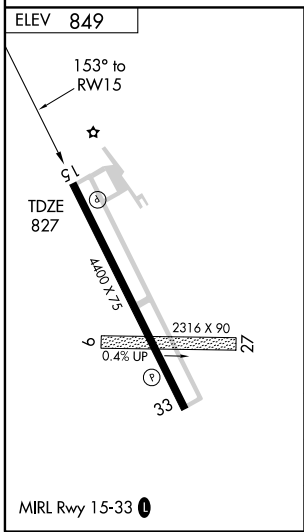
**MISSED APPROACH:** Climb to 3000 via 153° course to PBURG WP and hold.

<b>AWOS-3</b> <b>119.275</b>	<b>CEDAR RAPIDS APP CON *</b> <b>134.05 266.8</b>	<b>UNICOM</b> <b>122.8 (CTAF) 1</b>
---------------------------------	--	--



NC-3, 22 OCT 2009 to 19 NOV 2009

NC-3, 22 OCT 2009 to 19 NOV 2009



CATEGORY	A	B	C	D
GLS PA DA	NA			
LNAV/VNAV DA	1300-1¾	473 (500-1¾)		NA
LNAV MDA	1320-1	493 (500-1)	1320-1¼ 493 (500-1¼)	NA
CIRCLING	1360-1¾ 511 (600-1¾)	1380-1¾ 531 (600-1¾)	1400-1¾ 551 (600-1¾)	NA

MONTICELLO, IOWA  
Orig 08157

42°13'N - 91°10'W

# RNAV (GPS) RWY 15