

MIAMI, FLORIDA

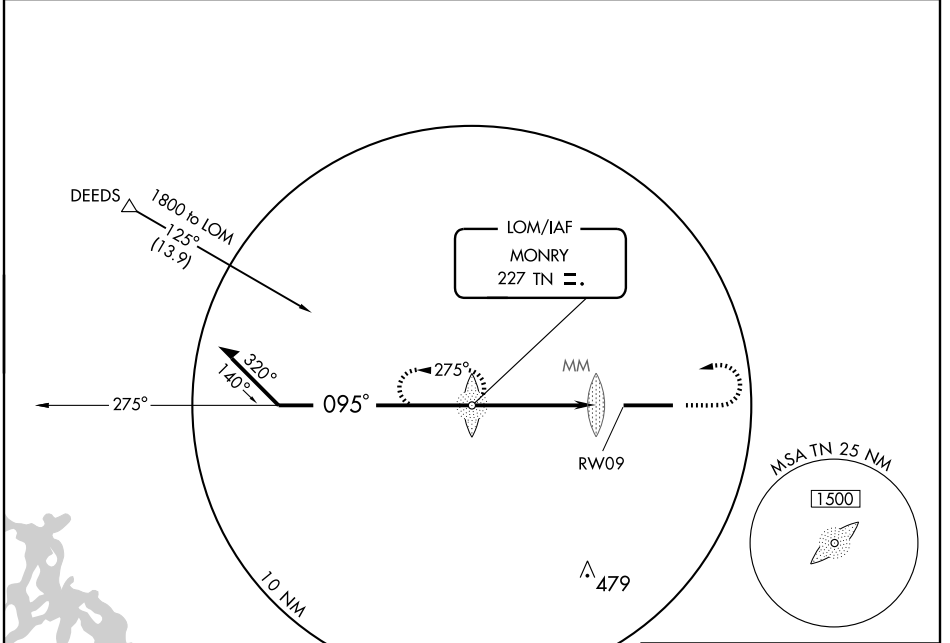
AL-5744 (FAA)

# NDB or GPS RWY 9

LOM TN <b>227</b>	APP CRS <b>095°</b>	Rwy Idg <b>10499</b> TDZE <b>13</b> Apt Elev <b>13</b>
----------------------	------------------------	--

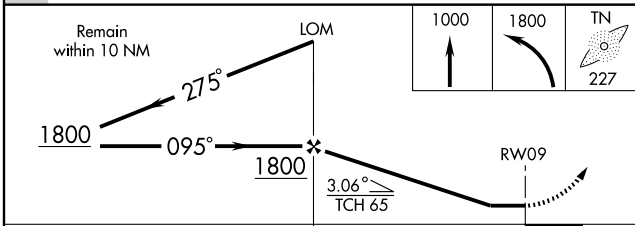
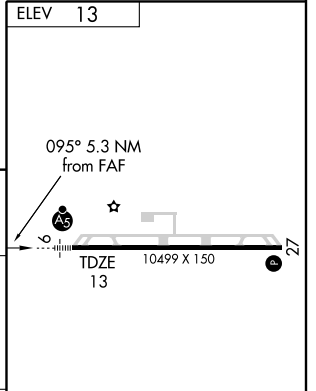
MIAMI/DADE-COLLIER TRAINING AND TRANSITION (TNT)

NA Use Miami/Kendall-Tamiami Executive altimeter setting. Inoperative table does not apply to S-9 CAT C.	MALS AS	MISSED APPROACH: Climb to 1000 then climbing left turn to 1800 direct TN LOM and hold.



SE-3, 22 OCT 2009 to 19 NOV 2009

SE-3, 22 OCT 2009 to 19 NOV 2009



CATEGORY	A	B	C	D
S-9	480-¾ 467 (500-¾)		480-1¼ 467 (500-1¼)	480-1½ 467 (500-1½)
CIRCLING	480-1 467 (500-1)		480-1½ 467 (500-1½)	580-2 567 (600-2)

HIRL Rwy 9-27					
FAF to MAP 5.3 NM					
Knots	60	90	120	150	180
Min:Sec	5:18	3:32	2:39	2:07	1:46

MIAMI, FLORIDA  
Amdt 13 08213

MIAMI/DADE-COLLIER TRAINING AND TRANSITION (TNT)  
25° 52' N-80° 54' W

# NDB or GPS RWY 9