

MIAMI, FLORIDA

AL-5744 (FAA)

ILS RWY 9

MIAMI/DADE-COLLIER TRAINING AND TRANSITION (TNT)

LOC I-TNT 108.3	APP CRS 095°	Rwy Idg 10499 TDZE 13 Apt Elev 13
---------------------------	------------------------	--

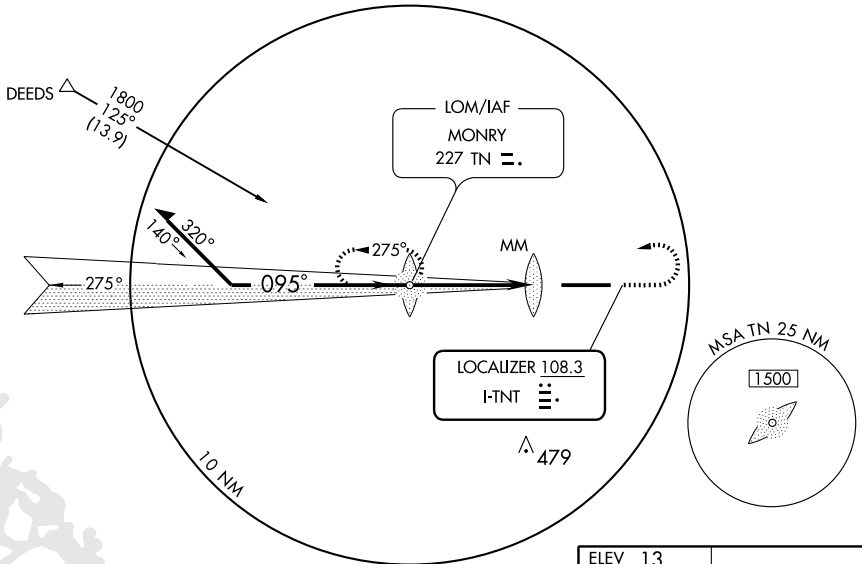
▲ NA Use Miami/Kendall-Tamiami Executive altimeter setting. Inoperative table does not apply to S-LOC 9 Cat. C.

MALSR
AS MISSED APPROACH: Climb to 1000 then climbing left turn to 1800 direct MONRY LOM and hold.

MIAMI CENTER
132.4 281.5

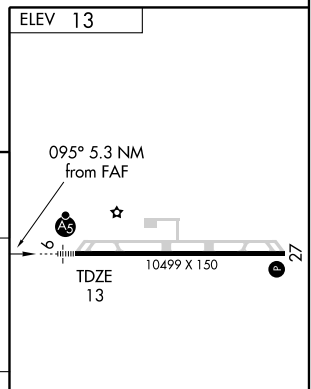
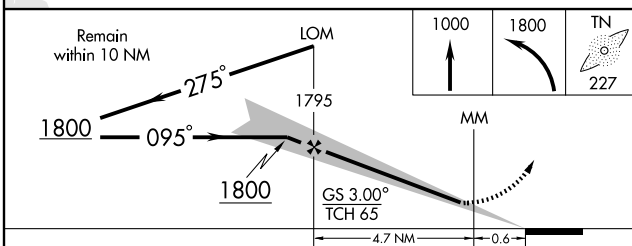
UNICOM
123.0 (CTAF) 0

ADF REQUIRED



SE-3, 22 OCT 2009 to 19 NOV 2009

SE-3, 22 OCT 2009 to 19 NOV 2009



CATEGORY	A	B	C	D
S-ILS 9		279-¾	266 (300-¾)	
S-LOC 9	440-¾	427 (500-¾)	440-1¼ 427 (500-1¼)	440-1½ 427 (500-1½)
CIRCLING	480-1	467 (500-1)	480-1½ 467 (500-1½)	580-2 567 (600-2)

HIRL Rwy 9-27 0

FAF to MAP 5.3 NM

Knots	60	90	120	150	180
Min:Sec	5:18	3:32	2:39	2:07	1:46

MIAMI, FLORIDA
Amdt 14 08213

MIAMI/DADE-COLLIER TRAINING AND TRANSITION (TNT)
25° 52' N-80° 54' W

ILS RWY 9