


# RNAV (GPS) RWY 4

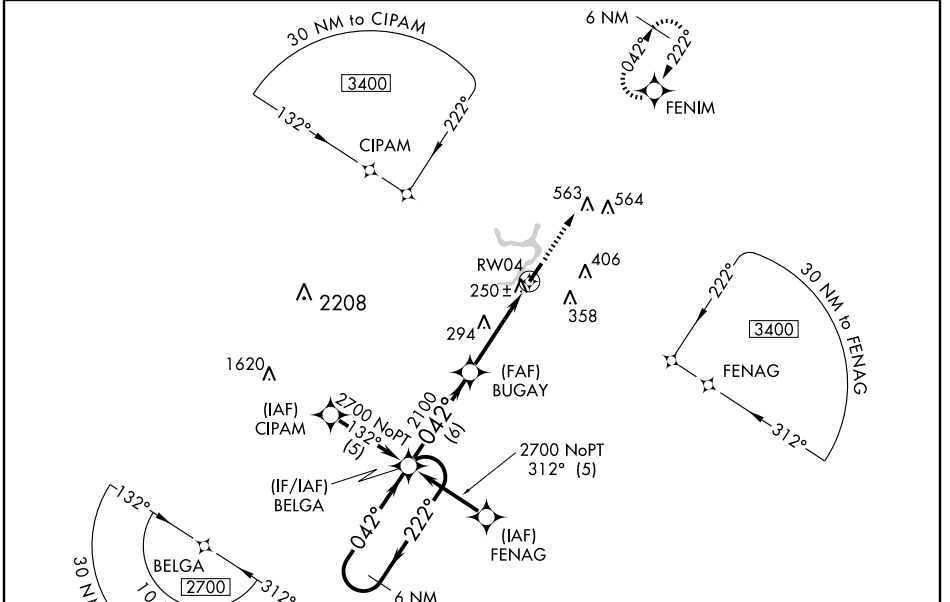
ROCKY MOUNT-WILSON RGNL (R.WI)

WAAS CH <b>56513</b> <b>W04A</b>	APP CRS <b>042°</b>	Rwy Idg TDZE Apt Elev	<b>7100</b> <b>159</b> <b>159</b>
--	------------------------	-----------------------------	---

**⚠** For uncompensated Baro-VNAV systems, LNAV/VNAV NA below -15°C (5°F) or above 48°C (118°F). DME/DME RNP-0.3 NA. When local altimeter setting not received, use Goldsboro-Wayne Muni altimeter setting and increase all DA 59 feet, all MDA 60 feet, increase LNAV/VNAV all Cats. visibility 1/4 mile. For inoperative MALSR, increase LNAV Cat. D visibility to 1/4 mile. Baro-VNAV and VDP NA when using Goldsboro-Wayne Muni altimeter setting.

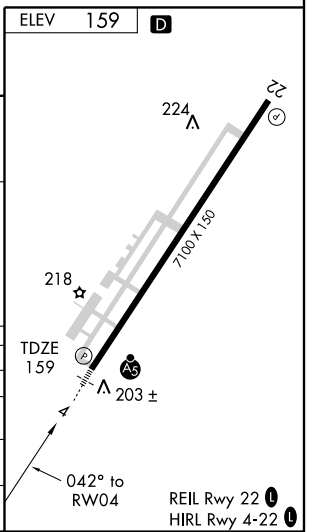
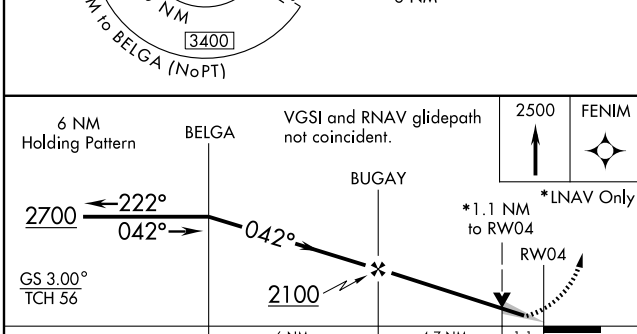
**MALSR**  
  
**MISSED APPROACH:**  
 Climb to 2500 direct FENIM and hold.

ASOS <b>118.875</b>	WASHINGTON CENTER <b>118.475 279.65</b>	CLNC DEL <b>122.3</b>	UNICOM <b>123.05 (CTAF) 0</b>
------------------------	--	--------------------------	----------------------------------



SE-2, 22 OCT 2009 to 19 NOV 2009

SE-2, 22 OCT 2009 to 19 NOV 2009



CATEGORY	A	B	C	D
LPV DA	359-1/2 200 (200-1/2)			
LNAV/VNAV DA	521-3/4 362 (400-3/4)			
LNAV MDA	560-1/2 401 (500-1/2)	560-3/4 401 (500-3/4)		560-1 401 (500-1)
CIRCLING	600-1 441 (500-1)	620-1 461 (500-1)	620-1 1/2 461 (500-1 1/2)	720-2 561 (600-2)

REIL Rwy 22 0  
HIRL Rwy 4-22 0