

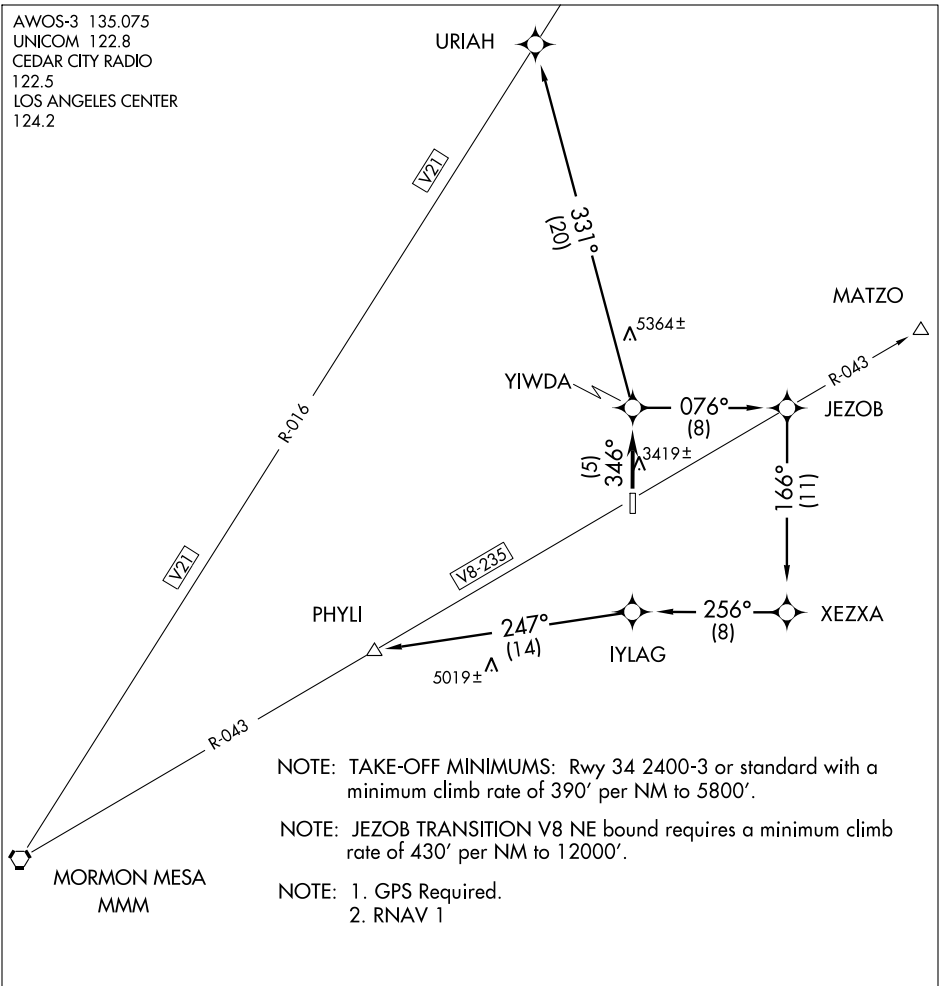
(YIWDA1.YIWDA) 07074

SL-5742 (FAA)

ST. GEORGE MUNI (SGU)
ST. GEORGE, UTAH

YIWDA ONE DEPARTURE (RNAV)

AWOS-3 135.075
UNICOM 122.8
CEDAR CITY RADIO
122.5
LOS ANGELES CENTER
124.2



SW-4, 22 OCT 2009 to 19 NOV 2009

SW-4, 22 OCT 2009 to 19 NOV 2009

NOTE: TAKE-OFF MINIMUMS: Rwy 34 2400-3 or standard with a minimum climb rate of 390' per NM to 5800'.

NOTE: JEZOB TRANSITION V8 NE bound requires a minimum climb rate of 430' per NM to 12000'.

- NOTE: 1. GPS Required.
- NOTE: 2. RNAV 1

DEPARTURE ROUTE DESCRIPTION

TAKE-OFF RUNWAY 34: Climb to 12000 (or assigned altitude) via course 346° to YIWDA WP then via assigned transition/route.

TAKE-OFF RUNWAY 16: Not authorized.

JEZOB TRANSITION (YIWDA1.JEZOB): From over YIWDA WP via course 076° to JEZOB WP.

PHYLI TRANSITION (YIWDA1.PHYLI)

URIAH TRANSITION (YIWDA1.URIAH)

YIWDA ONE DEPARTURE (RNAV)
(YIWDA1.YIWDA) 07074

ST. GEORGE, UTAH
ST. GEORGE MUNI (SGU)