

ST. GEORGE, UTAH

AL-5742 (FAA)

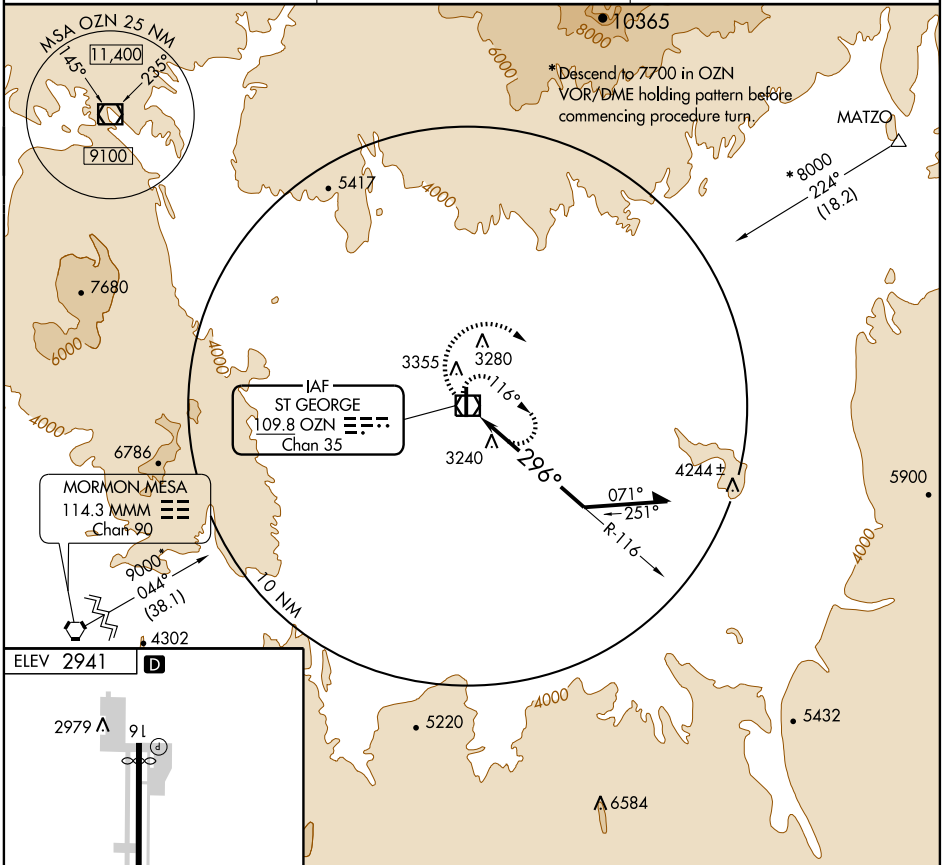
VOR or GPS-B ST. GEORGE MUNI (SGU)

VOR/DME OZN 109.8 Chan 35	APP CRS 296°	Rwy Idg TDZE Apt Elev 2941	N/A N/A 2941
---	------------------------	--	---

▽
▲

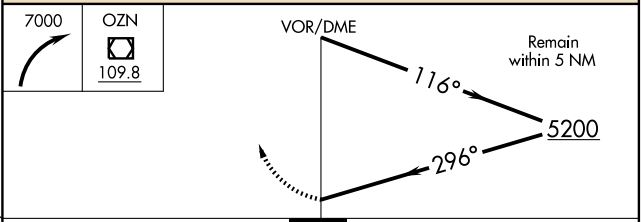
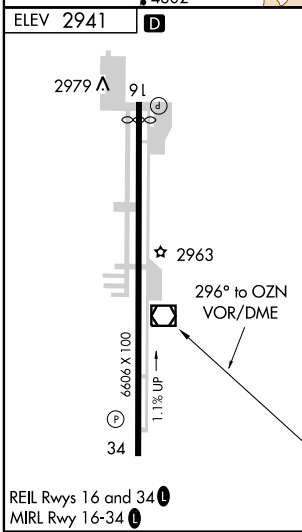
MISSED APPROACH: Climbing right turn to 7000 in OZN VOR/DME holding pattern.

AWOS-3 135.075	CEDAR CITY RADIO 122.5	UNICOM 122.8 (CTAF) ①
--------------------------	----------------------------------	--



SW-4, 22 OCT 2009 to 19 NOV 2009

SW-4, 22 OCT 2009 to 19 NOV 2009



CATEGORY	A	B	C	D
CIRCLING	4200-1¼ 1262 (1300-1¼)		NA	

ST. GEORGE, UTAH
Amdt 2A 08325

37°05'N-113°36'W

ST. GEORGE MUNI (SGU) VOR or GPS-B