

KINGSVILLE, TEXAS

AL-5740 (FAA)

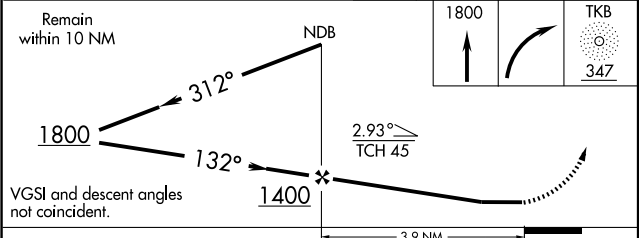
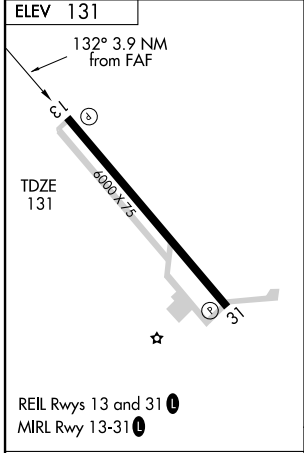
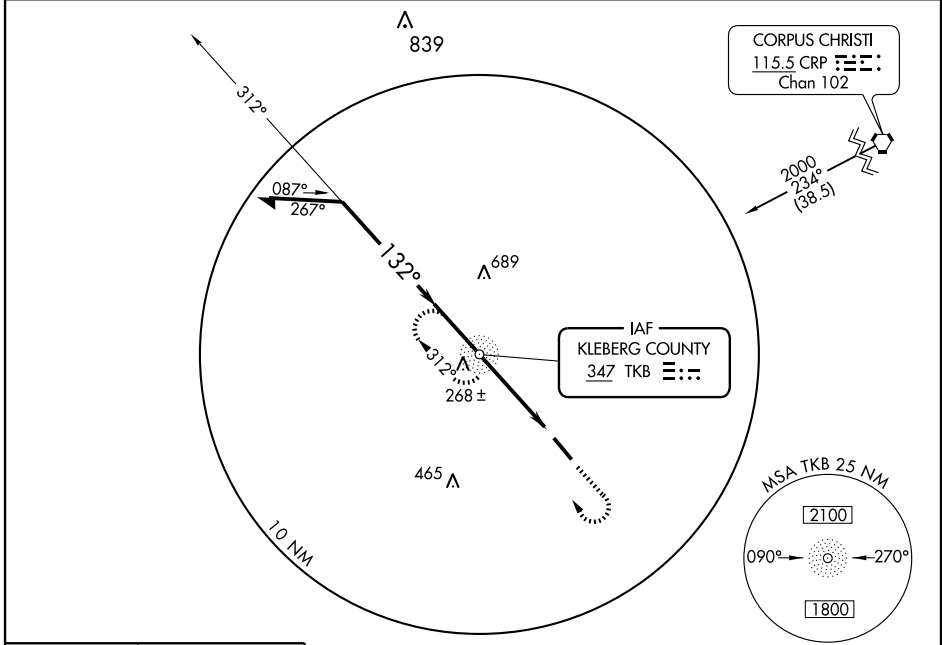
NDB RWY 13

KINGSVILLE/KLEBERG COUNTY (IKG)

| | | |
|-----------------------|------------------------|------------------------|
| NDB TKB 347 | APP CRS 132° | Rwy Idg 6000 |
| | TDZE 131 | |
| | Apt Elev 131 | |

NA Use Navy Kingsville altimeter setting, when not received use Corpus Christi altimeter setting. MISSED APPROACH: Climb to 1800 then right turn direct TKB NDB and hold.

| | | |
|--------------------------|---|-------------------------------|
| AWOS-3 119.075 | KINGSVILLE APP CON * 119.9 290.45 | UNICOM 122.7 (CTAF) |
|--------------------------|---|-------------------------------|



| CATEGORY | A | B | C | D |
|---|-------|-------------|------------------------|------------------------|
| S-13 | 600-1 | 469 (500-1) | 600-1¼ 469 (500-1¼) | 600-1½ 469 (500-1½) |
| CIRCLING | 600-1 | 469 (500-1) | 600-1½ 469 (500-1½) | 700-2 569 (600-2) |
| CORPUS CHRISTI ALTIMETER SETTING MINIMUMS | | | | |
| S-13 | 660-1 | 529 (600-1) | 660-1½ 529 (600-1½) | 660-1¾ 529 (600-1¾) |
| CIRCLING | 660-1 | 529 (600-1) | 660-1½ 529 (600-1½) | 700-2 569 (600-2) |

| | | | | | |
|-------------------|------|------|------|------|------|
| FAF to MAP 3.9 NM | | | | | |
| Knots | 60 | 90 | 120 | 150 | 180 |
| Min:Sec | 3:54 | 2:36 | 1:57 | 1:34 | 1:18 |

KINGSVILLE, TEXAS
Amdt 5A 08213

27° 33' N - 98° 02' W

KINGSVILLE/KLEBERG COUNTY (IKG)
NDB RWY 13

SC-3, 22 OCT 2009 to 19 NOV 2009

SC-3, 22 OCT 2009 to 19 NOV 2009