

BISHOP, CALIFORNIA

AL-5737 (FAA)

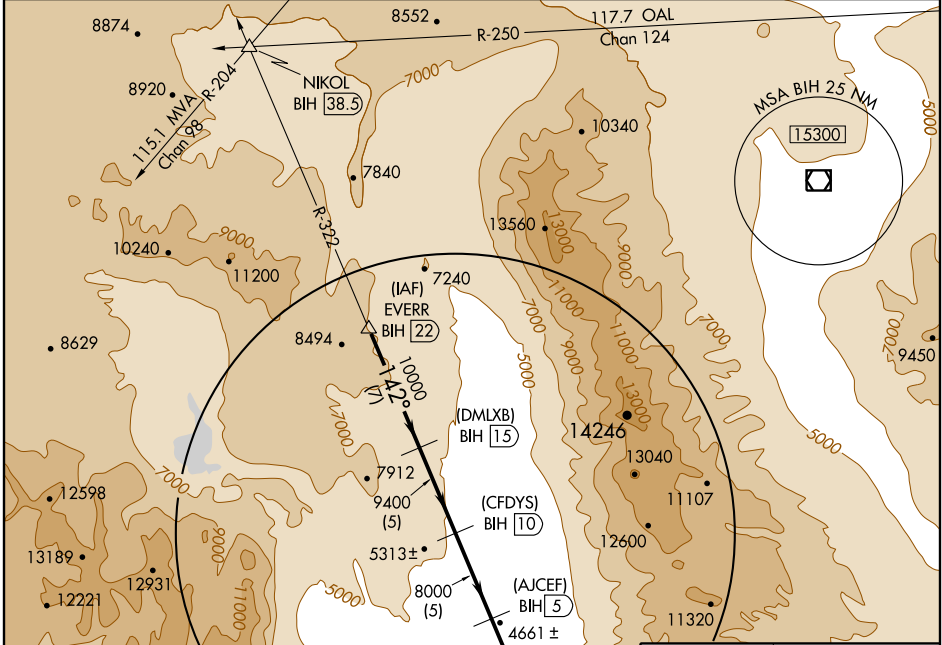
# VOR/DME or GPS-B BISHOP / EASTERN SIERRA RGNL (BIH)

VOR/DME BIH <b>109.6</b> Chan <b>33</b>	APP CRS <b>142°</b>	Rwy Idg TDZE Apt Elev <b>N/A</b> <b>N/A</b> <b>4124</b>
---	------------------------	--

**▽**  
**▲**

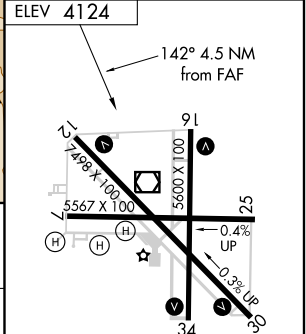
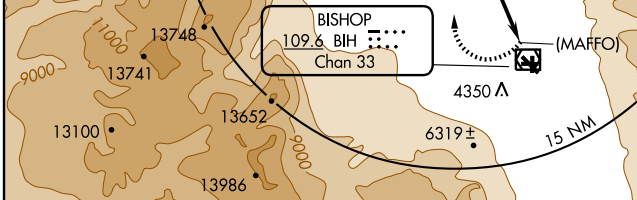
MISSED APPROACH: Climbing right turn to 13000 via BIH R-322 to NIKOL INT/BIH 38.5 DME.

ASOS <b>119.025</b>	OAKLAND CENTER <b>125.75 284.65</b>	RIVERSIDE RADIO <b>122.6</b>	UNICOM <b>123.0 (CTAF)</b> <b>①</b>
------------------------	--	---------------------------------	--



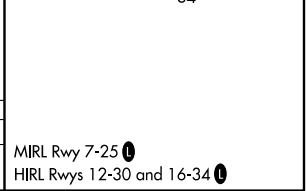
SW-2, 22 OCT 2009 to 19 NOV 2009

SW-2, 22 OCT 2009 to 19 NOV 2009



Procedure Turn NA	EVERR BIH 22	(DMLXB) BIH 15	(CFDYS) BIH 10	(AJCEF) BIH 5	(MAFFO) BIH 0.5
	13000	10000	9400	8000	4350 A
	7 NM	5 NM	5 NM	4.5 NM	

CATEGORY	A	B	C	D
CIRCLING	7300-1¼ 3176 (3200-1¼)	7300-1½ 3176 (3200-1½)	7300-3	3176 (3200-3)



BISHOP, CALIFORNIA  
Amdt 4A 09239

# BISHOP / EASTERN SIERRA RGNL (BIH) VOR/DME or GPS-B

37°22'N - 118°22'W

MIRL Rwy 7-25 **①**  
HIRL Rwy 12-30 and 16-34 **①**