

LDA/DME RWY 16

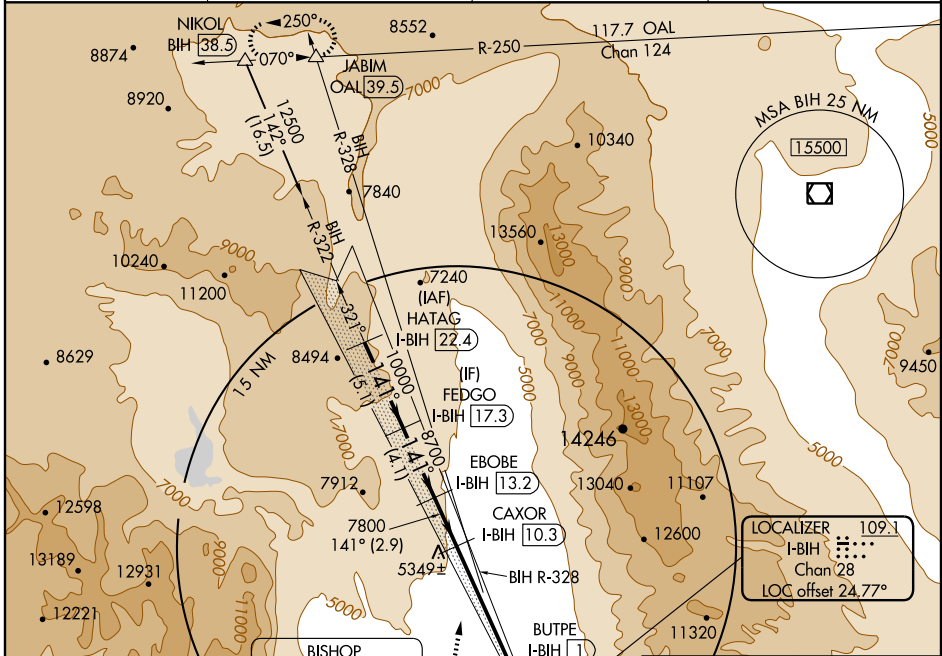
BISHOP / EASTERN SIERRA RGNL (BIH)

LOC/DME I-BIH 109.1 Chan 28	APP CRS 141°	Rwy Idg TDZE Apt Elev	5600 4113 4124
--	------------------------	-----------------------------	---

Visibility reduction by helicopters NA.

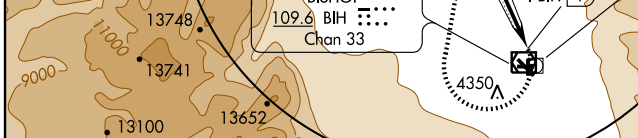
MISSED APPROACH: Climbing right turn to 12500 via heading 355° and via BIH VOR/DME R-328 to JABIM INT/OAL 39.5 DME and hold.

ASOS 119.025	OAKLAND CENTER 125.75 284.65	RIVERSIDE RADIO 122.6	UNICOM 123.0 (CTAF)
------------------------	--	---------------------------------	-------------------------------

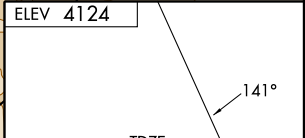


SW-2, 22 OCT 2009 to 19 NOV 2009

SW-2, 22 OCT 2009 to 19 NOV 2009



HATAG I-BIH [22.4]	Use I-BIH DME when on the localizer course.		12500	BIH R-328 109.6	JABIM
	FEDGO I-BIH [17.3]	EBOBE I-BIH [13.2]	VGSI and descent angles not coincident.		
Procedure Turn NA	12500	10000	8700	7800	Butpe I-BIH [1]
	5.1 NM		4.1 NM	2.9 NM	9.3 NM



CATEGORY	A	B	C	D
S-16	6340-1¼ 2227 (2300-1¼)	6340-1½ 2227 (2300-1½)	6340-3	2227 (2300-3)
CIRCLING	6340-1¼ 2216 (2300-1¼)	6340-1½ 2216 (2300-1½)	6340-3	2216 (2300-3)

