

INDIANAPOLIS, INDIANA

AL-5733 (FAA)

VOR-A

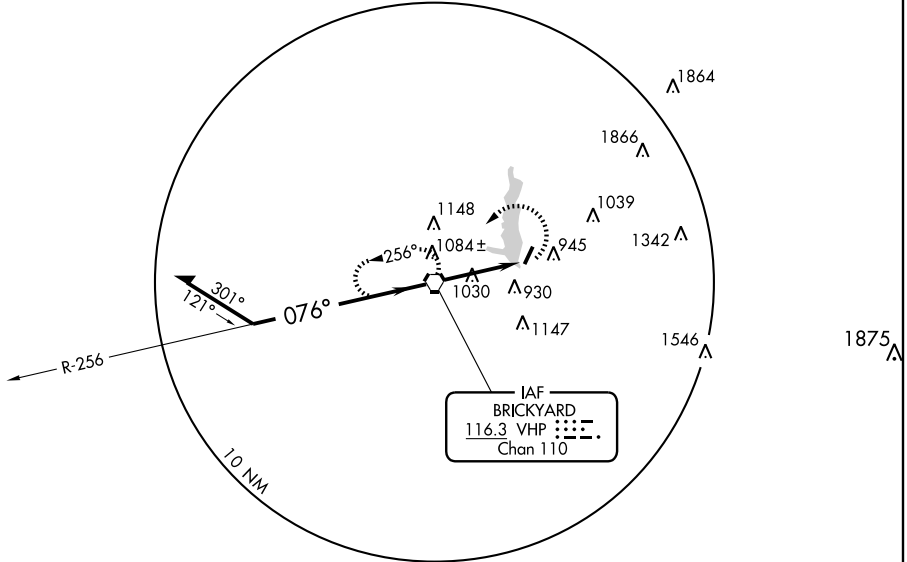
INDIANAPOLIS/ EAGLE CREEK AIRPARK (EYE)

VORTAC VHP 116.3 Chan 110	APP CRS 076°	Rwy Idg TDZE Apt Elev N/A N/A 823
---	------------------------	---

▽ When local altimeter setting not received, use Indianapolis Intl altimeter setting and increase all MDA 20 feet.

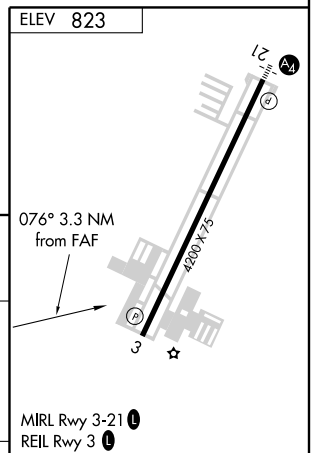
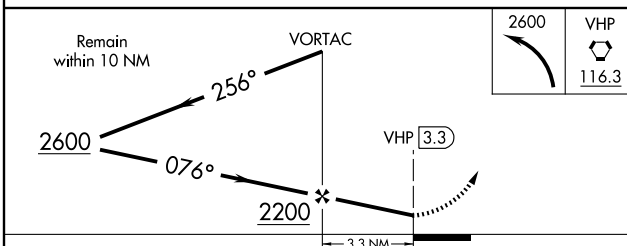
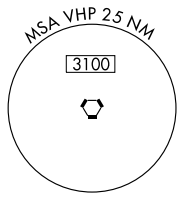
MISSED APPROACH: Climbing left turn to 2600 direct VHP VORTAC and hold.

ASOS 121.575	INDIANAPOLIS APP CON 119.05 317.8	CLNC DEL 128.6	UNICOM 122.8 (CTAF)
------------------------	---	--------------------------	-------------------------------



EC-2, 22 OCT 2009 to 19 NOV 2009

EC-2, 22 OCT 2009 to 19 NOV 2009



CATEGORY	A	B	C	D	FAF to MAP 3.3 NM					
CIRCLING	1300-1	477 (500-1)	1300-1½ 477 (500-1½)	NA	Knots	60	90	120	150	180
					Min:Sec	3:18	2:12	1:39	1:19	1:06

INDIANAPOLIS, INDIANA
Amdt 7 08325

INDIANAPOLIS/ EAGLE CREEK AIRPARK (EYE)

39°50'N - 86°18'W

VOR-A