

WAAS CH 82509 W21A	APP CRS 208°	Rwy Idg TDZE Apt Elev	4200 823 823
--	------------------------	-----------------------------	---

RNAV (GPS) RWY 21

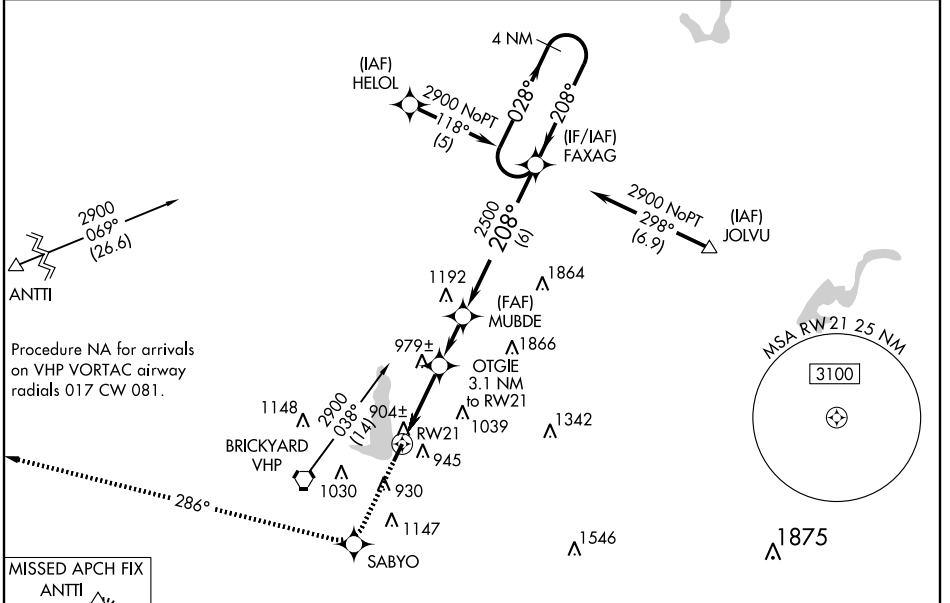
INDIANAPOLIS/ EAGLE CREEK AIRPARK (EYE)

⚠ DME/DME RNP-0.3 NA. Visibility reduction by helicopters NA.
 For uncompensated Baro-VNAV systems, LNAV/VNAV NA below -16°C (4°F) or above 54°C (130°F).
⚠ Baro-VNAV and VDP NA when using Indianapolis Intl altimeter setting. When local altimeter setting not received use Indianapolis Intl altimeter setting and increase all DA/MDA 20 ft. Inoperative table does not apply.

MALSF

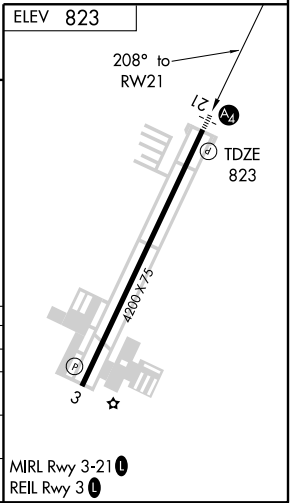
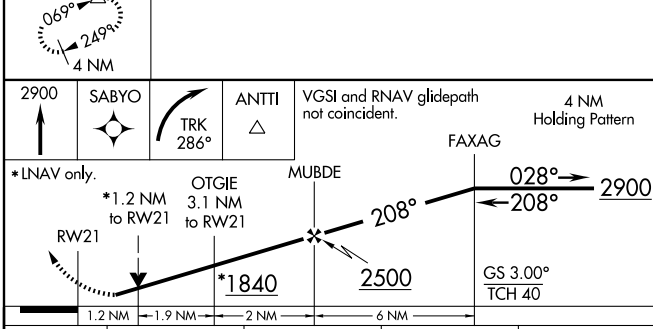
MISSED APPROACH: Climb to 2900 direct SABYO and right turn via 286° track to ANTTI and hold.

ASOS 121.575	INDIANAPOLIS APP CON 119.05 317.8	CLNC DEL 128.6	UNICOM 122.8 (CTAF)
------------------------	---	--------------------------	-------------------------------



EC-2, 22 OCT 2009 to 19 NOV 2009

EC-2, 22 OCT 2009 to 19 NOV 2009



CATEGORY	A	B	C	D
LPV DA	1097-3/4 274 (300-3/4)			NA
LNAV/VNAV DA	1165-1/4 342 (400-1/4)			NA
LNAV MDA	1240-3/4 417 (500-3/4)		1240-1/4 417 (500-1/4)	NA
CIRCLING	1300-1 477 (500-1)		1300-1/2 477 (500-1/2)	NA