

| | | |
|-------------|----------|-------------|
| APP CRS | Rwy Idg | 5509 |
| 275° | TDZE | 380 |
| | Apt Elev | 384 |

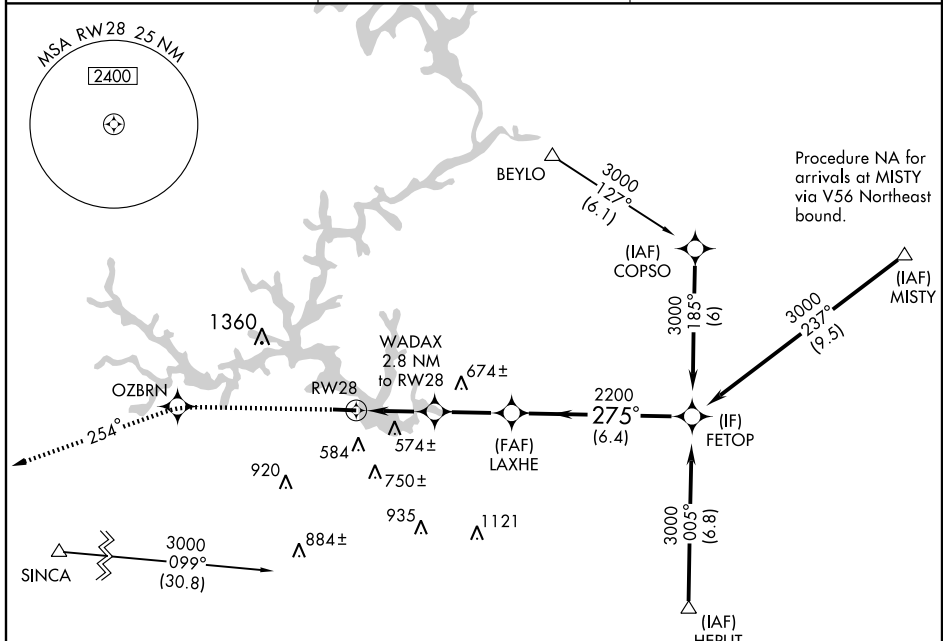
RNAV (GPS) RWY 28

MILLEDGEVILLE/BALDWIN COUNTY (MLJ)

NA DME/DME RNP-0.3 NA. When local altimeter setting not received, use Middle Georgia Rgnl altimeter setting and increase all MDAs 100 feet. VDP NA when using Middle Georgia Rgnl altimeter setting.

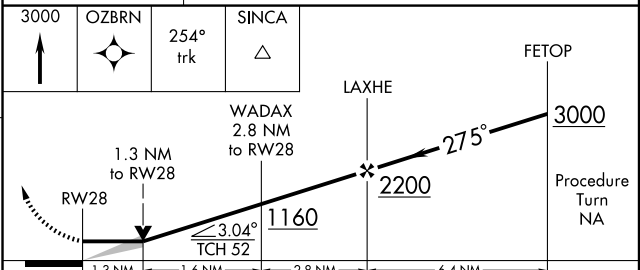
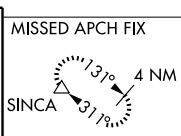
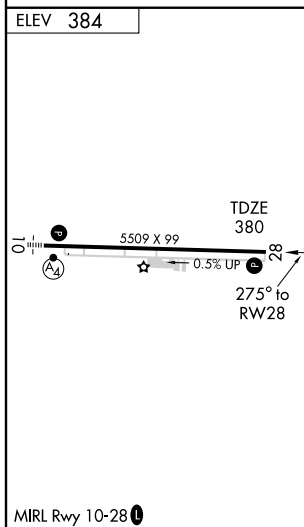
MISSED APPROACH: Climb to 3000 direct OZBRN and via 254° track to SINCA and hold.

| | | |
|--------------------------|---|-------------------------------|
| AWOS-3 120.925 | ATLANTA APP CON * 124.2 279.6 | UNICOM 122.8 (CTAF) |
|--------------------------|---|-------------------------------|



SE-4, 22 OCT 2009 to 19 NOV 2009

SE-4, 22 OCT 2009 to 19 NOV 2009



| | | | | |
|----------|----------------------|----------------------|----|---|
| CATEGORY | A | B | C | D |
| LNAV MDA | 800-1 | 420 (500-1) | NA | |
| CIRCLING | 920-1 536 (600-1) | 940-1 556 (600-1) | NA | |