

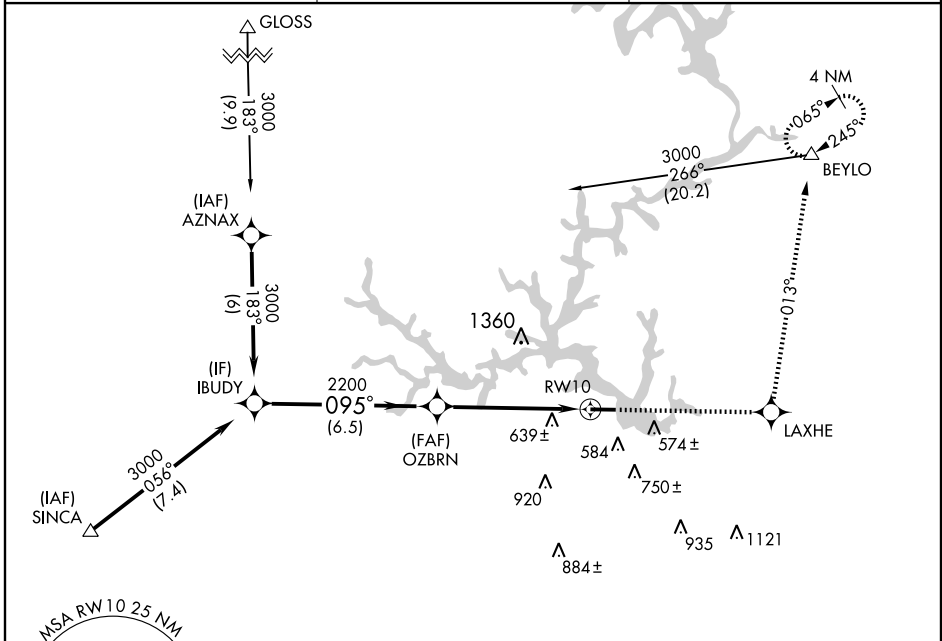
APP CRS	Rwy Idg	<b>5509</b>
<b>095°</b>	TDZE	<b>386</b>
	Apt Elev	<b>384</b>

# RNAV (GPS) RWY 10

MILLEDGEVILLE/ BALDWIN COUNTY (MLJ)

<p><b>NA</b> DME/DME RNP-0.3 NA. Visibility reduction by helicopters NA. When local altimeter setting not received, use Middle Georgia Rgnl altimeter setting and increase all MDAs 100 feet. Inoperative table does not apply.</p>	<p><b>MALSF</b></p>	<p><b>MISSED APPROACH:</b> Climb to 3000 direct LAXHE and via 013° track to BEYLO and hold.</p>
---	---------------------	---

<p><b>AWOS-3</b> <b>120.925</b></p>	<p><b>ATLANTA APP CON *</b> <b>124.2 279.6</b></p>	<p><b>UNICOM</b> <b>122.8 (CTAF)</b></p>
---	--	--



SE-4, 22 OCT 2009 to 19 NOV 2009

SE-4, 22 OCT 2009 to 19 NOV 2009

<p>Procedure Turn NA</p>		<p>3000</p>		<p>LAXHE</p>		<p>013° trk</p>		<p>BEYLO</p>	
<p>VGSI and descent angles not coincident.</p>		<p>3000</p>		<p>2200</p>		<p>3.04°</p>		<p>TCH 45</p>	
		<p>6.5 NM</p>		<p>5.5 NM</p>					
CATEGORY	A	B	C	D					
RNAV MDA	900-1	514 (600-1)	NA						
CIRCLING	920-1 536 (600-1)	940-1 556 (600-1)	NA						

