

GILLETTE, WYOMING

AL-5728 (FAA)

VOR/DME GCC <b>114.6</b> Chan 93	APP CRS <b>334°</b>	Rwy Idg 7500	TDZE 4365	Apt Elev 4365
--	------------------------	-----------------	--------------	------------------

# VOR/DME RWY 34

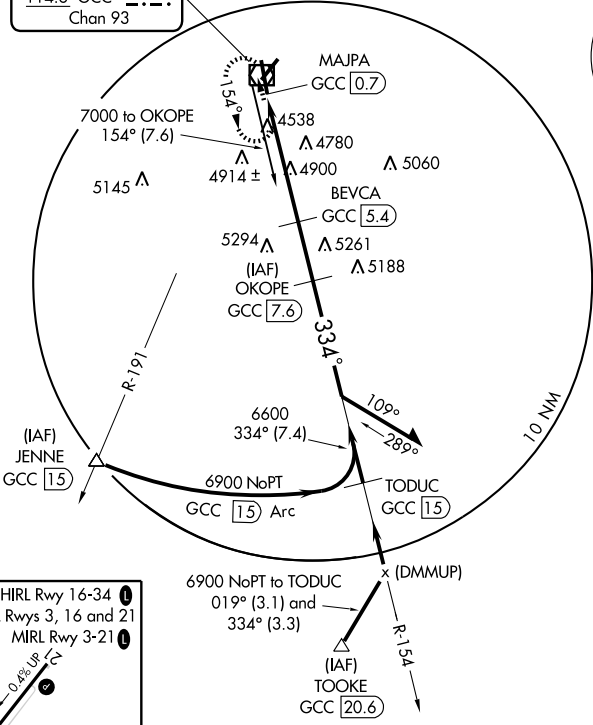
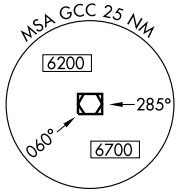
GILLETTE-CAMPBELL COUNTY (GCC)

**▼** For inoperative MALSR, increase S-34 Cat A visibility to 1. **MALSR** MISSED APPROACH: Climb to 7000 via GCC VOR/DME R-154 to GCC VOR/DME and hold, continue climb-in-hold to 7000.

**▲** When VGSI inoperative, Circling Rwy 3 NA at night. If local altimeter setting not received, procedure NA.

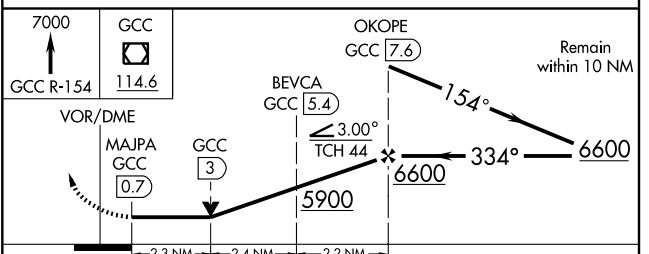
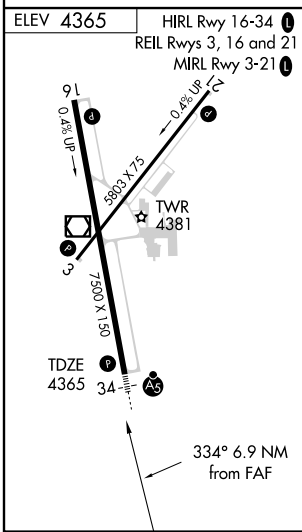
ASOS <b>124.175</b>	DENVER CENTER <b>135.6 363.025</b>	GILLETTE TOWER * <b>118.5 (CTAF) 0</b>	GND CON <b>121.7</b>	UNICOM <b>122.95</b>
------------------------	---------------------------------------	---	-------------------------	-------------------------

GILLETTE  
114.6 GCC  
Chan 93



NW-1, 22 OCT 2009 to 19 NOV 2009

NW-1, 22 OCT 2009 to 19 NOV 2009



CATEGORY	A	B	C	D
S-34	5200- <sup>3</sup> / <sub>4</sub> 835 (900- <sup>3</sup> / <sub>4</sub> )	5200-2 835 (900-2)	5200-2 835 (900-2 1/2)	5280-3 915 (1000-3)
CIRCLING	5200-1 835 (900-1)	5200-1 1/4 835 (900-1 1/4)	5200-2 1/2 835 (900-2 1/2)	

GILLETTE, WYOMING  
Amdt 1 09239

44°21'N-105°32'W

# GILLETTE-CAMPBELL COUNTY (GCC) VOR/DME RWY 34