

GILLETTE, WYOMING

AL-5728 (FAA)

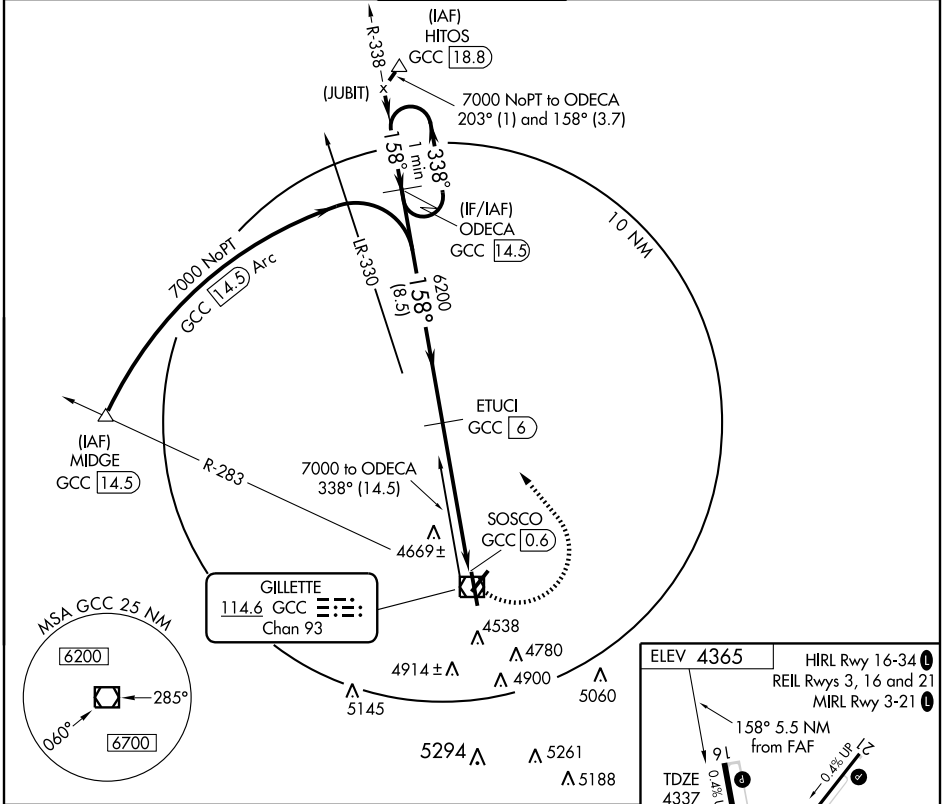
VOR/DME RWY 16
GILLETTE-CAMPBELL COUNTY (GCC)

VOR/DME GCC 114.6 Chan 93	APP CRS 158°	Rwy Idg TDZE Apt Elev	7500 4337 4365
---	------------------------	-----------------------------	---

▼ Visibility reduction by helicopters NA.
▲ If local altimeter setting not received, procedure NA.
 When VGSI inoperative, circling Rwy 3 NA at night.

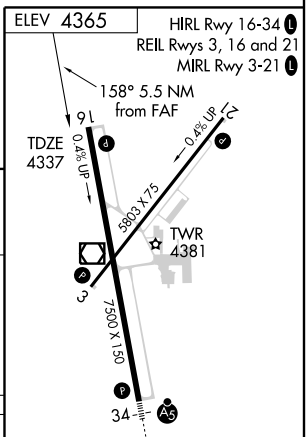
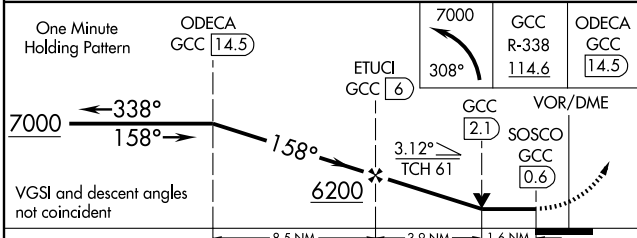
MISSED APPROACH: Climbing left turn to 7000 via heading 308° and GCC R-338 to ODECA/14.5 DME and hold.

ASOS 124.175	DENVER CENTER 135.6 363.025	GILLETTE TOWER * 118.5 (CTAF) 0	GND CON 121.7	UNICOM 122.95
------------------------	---------------------------------------	---	-------------------------	-------------------------



NW-1, 22 OCT 2009 to 19 NOV 2009

NW-1, 22 OCT 2009 to 19 NOV 2009



CATEGORY	A	B	C	D
S-16	4920-1 583 (600-1)	583 (600-1)	4920-1½ 583 (600-1½)	4920-1¾ 583 (600-1¾)
CIRCLING	5040-1 675 (700-1)	675 (700-1)	5120-2¼ 755 (800-2¼)	5280-3 915 (1000-3)

GILLETTE, WYOMING
Orig 09239

44°21'N-105°32'W

GILLETTE-CAMPBELL COUNTY (GCC)
VOR/DME RWY 16