

GILLETTE, WYOMING

AL-5728 (FAA)

WAAS Chan 86204 W34A	APP CRS 338°	Rwy Idg TDZE Apt Elev	7500 4365 4365
-----------------------------------	------------------------	-----------------------------	---

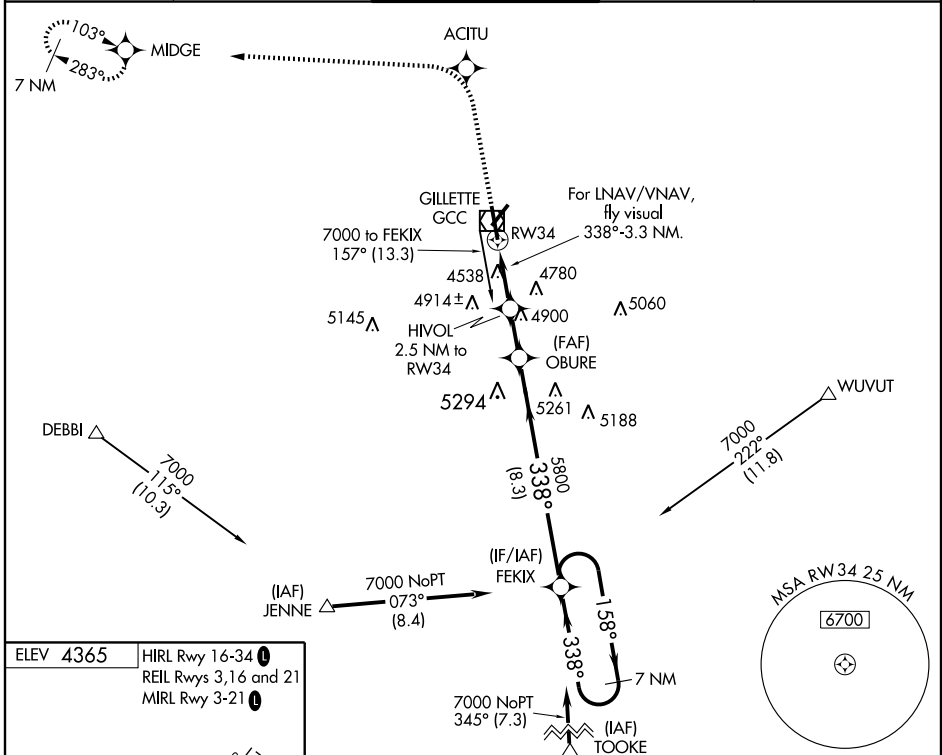
RNAV (GPS) RWY 34

GILLETTE-CAMPBELL COUNTY (GCC)

⚠ Inoperative table does not apply to LPV and LNAV/VNAV. For inoperative MALSR, increase LNAV Cat A visibility to 1. When VGSI inoperative, Circling Rwy 3 NA at night. If local altimeter setting not received, procedure NA. DME/DME RNP-0.3 NA. Baro-VNAV NA below -23°C (-9°F)

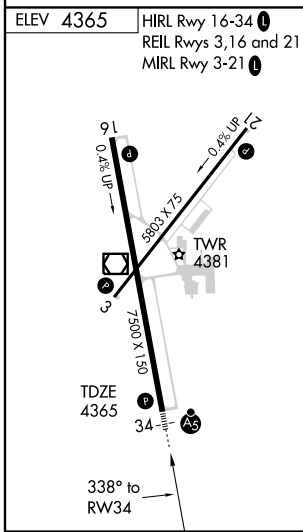
MALSR MISSED APPROACH: Climb to 7000 direct ACITU and via 261° track to MIDGE and hold.

ASOS 124.175	DENVER CENTER 135.6 363.025	GILLETTE TOWER* 118.5 (CTAF) 0	GND CON 121.7	UNICOM 122.95
------------------------	---------------------------------------	--	-------------------------	-------------------------



NW-1, 22 OCT 2009 to 19 NOV 2009

NW-1, 22 OCT 2009 to 19 NOV 2009



7000	ACITU	261° track	MIDGE	VGSI and RNAV glidepath not coincident	7 NM Holding Pattern
For LNAV/VNAV, fly visual 338°-3.3 NM		HIVOL 2.5 NM to RW34	OBURE	FEKIX	
RW34		5200	5800	158°	7000
2.5 NM		1.8 NM	8.3 NM	338°	GS 3.00° TCH 52
CATEGORY	A	B	C	D	
LPV DA	4620-¾		255 (300-¾)		
LNAV/VNAV DA	5480-2	1115 (1200-2)		5480-3	1115 (1200-3)
LNAV MDA	5120-¾	755 (800-¾)		5120-1¾	5120-2
CIRCLING	5480-4		1115 (1200-4)		

GILLETTE, WYOMING
Orig 09239

44°21'N-105°32'W

RNAV (GPS) RWY 34