

GILLETTE, WYOMING

AL-5728 (FAA)

RNAV (GPS) RWY 16

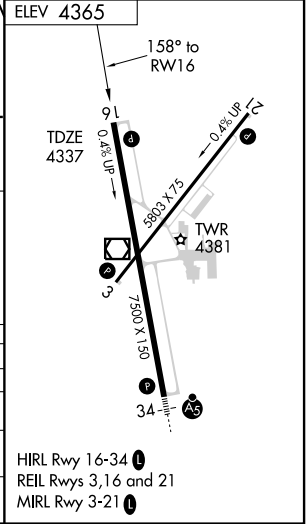
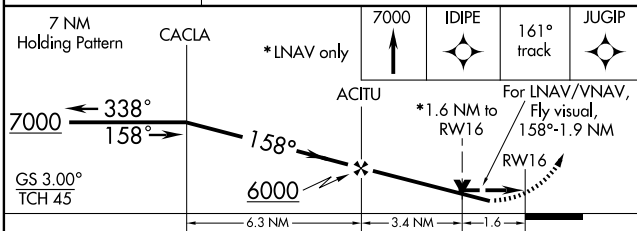
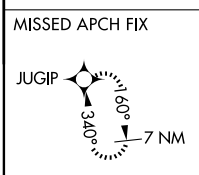
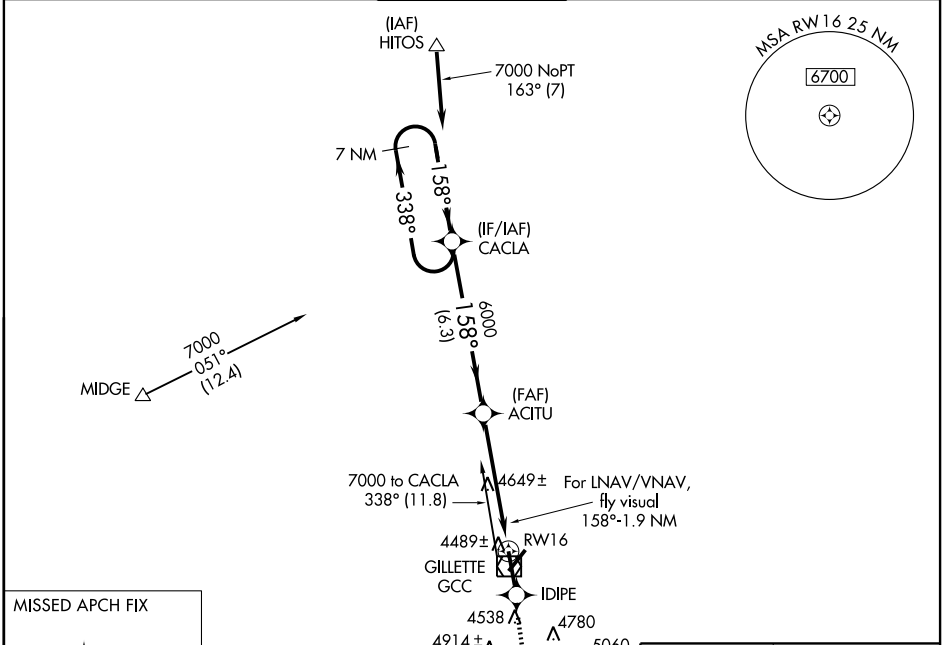
GILLETTE-CAMPBELL COUNTY (GCC)

WAAS Chan 86221 W16A	APP CRS 158°	Rwy Idg TDZE Apt Elev	7500 4337 4365
-----------------------------------	------------------------	-----------------------------	---

⚠ DME/DME RNP-0.3 NA. Baro-VNAV NA below -23°C (-9°F).
⚠ If local altimeter setting not received, procedure NA.
 When VGSI inoperative, circling Rwy 3 NA at night.

MISSED APPROACH: Climb to 7000 direct IDIPE and via 161° track to JUGIP and hold.

ASOS 124.175	DENVER CENTER 135.6 363.025	GILLETTE TOWER * 118.5 (CTAF) 0	GND CON 121.7	UNICOM 122.95
------------------------	---------------------------------------	--	-------------------------	-------------------------



CATEGORY	A	B	C	D
LPV DA	4660-1¼		323 (300-1¼)	
LNAV/ VNAV DA	4980-2		643 (700-2)	
LNAV MDA	4900-1	563 (600-1)	4900-1½ 563 (600-1½)	4900-1¾ 563 (600-1¾)
CIRCLING	5040-2¼	675 (700-2¼)	5120-2½ 755 (800-2½)	5280-3 915 (1000-3)

GILLETTE, WYOMING
 Orig 09239

44°21'N- 105°32'W

GILLETTE-CAMPBELL COUNTY (GCC)

RNAV (GPS) RWY 16

NW-1, 22 OCT 2009 to 19 NOV 2009

NW-1, 22 OCT 2009 to 19 NOV 2009