

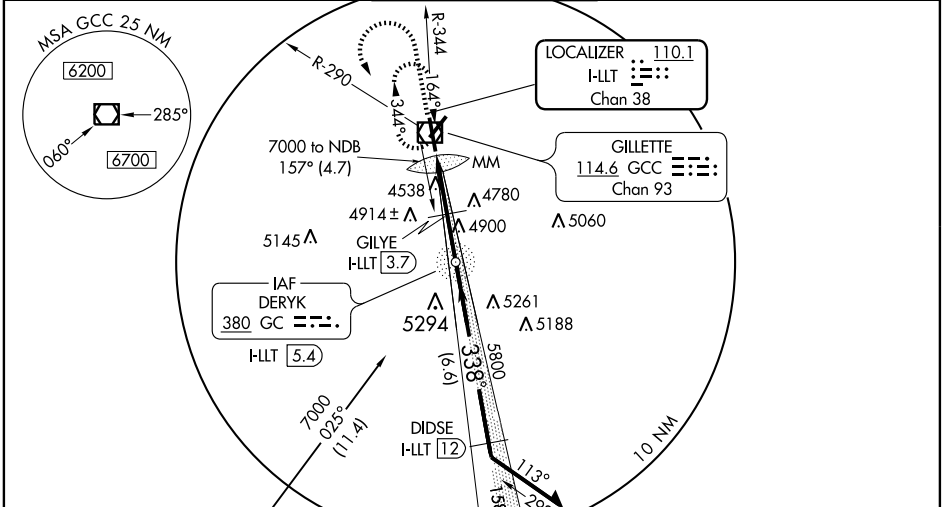
**ILS or LOC RWY 34**  
GILLETTE-CAMPBELL COUNTY (GCC)

LOC/DME I-LLT <b>110.1</b> Chan 38	APP CRS <b>338°</b>	Rwy Idg <b>7500</b> TDZE <b>4365</b> Apt Elev <b>4365</b>
--	------------------------	---

**▼** For inoperative MALSRL, increase S-LOC Cat A, and GILYE FIX MINIMUMS S-LOC Cat A/B visibilities to 1.  
**▲** Inoperative table does not apply to S-ILS 34.  
When VGSI inoperative, circling Rwy 3 NA at night.  
If local altimeter setting not received, procedure NA.  
ADF or DME required.

**MALSRL**  
MISSED APPROACH: Climb to 5700 then climbing left turn to 7000 via heading 150° and GCC VOR/DME R-290 to GCC VOR/DME and hold, continue climb-in-hold to 7000.

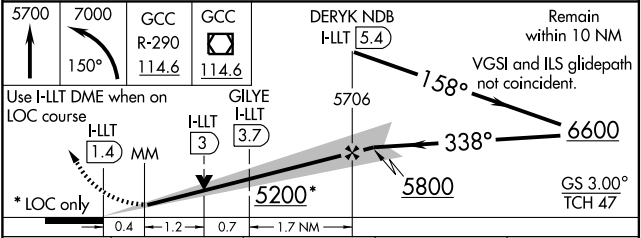
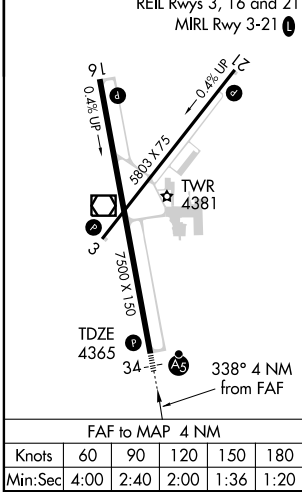
ASOS <b>124.175</b>	DENVER CENTER <b>135.6 363.025</b>	GILLETTE TOWER* <b>118.5 (CTAF)</b>	GND CON <b>121.7</b>	UNICOM <b>122.95</b>
------------------------	---------------------------------------	--	-------------------------	-------------------------



**ADF or DME REQUIRED**

JENNE GCC 15  
# DME Required  
# 6500 NoPT to DIDSE 350° (4.4) and LOC (5) (CFLHJ) x (IAF) TOOKE GCC 20.6

ELEV 4365	HIRL Rwy 16-34
	REIL Rwy 3, 16 and 21
	MIRL Rwy 3-21



CATEGORY	A	B	C	D
S-ILS 34		4565-¾	200 (200-¾)	
S-LOC 34	5200-¾	835 (900-¾)	5200-2 835 (900-2)	5200-2½ 835 (900-2½)
CIRCLING	5200-1 835 (900-1)	5200-1½ 835 (900-1½)	5200-2½ 835 (900-2½)	5280-3 915 (1000-3)
GILYE FIX MINIMUMS				
S-LOC 34	4940-¾	575 (600-¾)	4940-1 575 (600-1)	4940-1½ 575 (600-1½)
CIRCLING	5040-1	675 (700-1)	5120-2½ 755 (800-2½)	5280-3 915 (1000-3)

NW-1, 22 OCT 2009 to 19 NOV 2009

NW-1, 22 OCT 2009 to 19 NOV 2009