

PORT CLINTON, OHIO

AL-5727 (FAA)

# VOR/DME-A

PORT CLINTON/CARL R. KELLER FIELD (PCW)

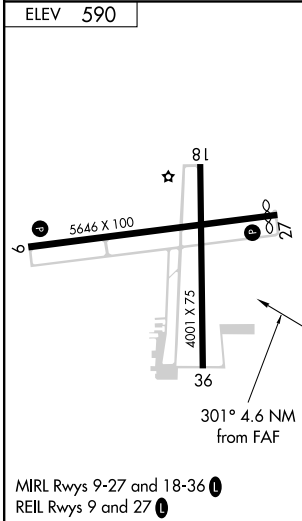
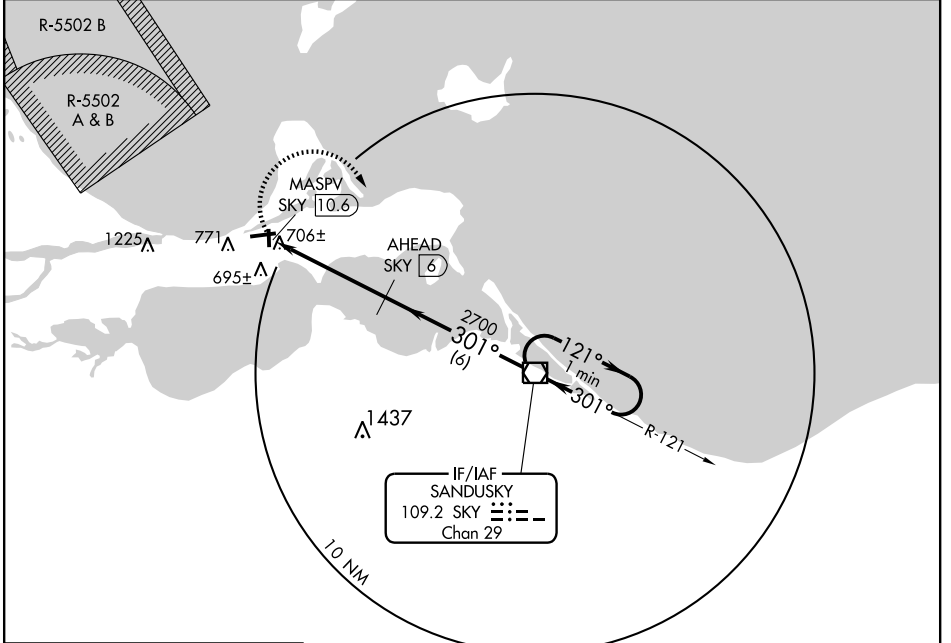
VOR/DME SKY <b>109.2</b> Chan 29	APP CRS <b>301°</b>	Rwy Idg TDZE Apt Elev	<b>N/A</b> <b>N/A</b> <b>590</b>
--	------------------------	-----------------------------	--

**⚠** When local altimeter setting not received, use Metcalf Field altimeter setting and increase all MDA 80 feet, and visibility Cat C ¼ mile.

**⚠** NA

MISSED APPROACH: Climbing right turn to 3000 direct SKY VOR/DME and hold.

AWOS-3 <b>118.775</b>	CLEVELAND APP CON <b>126.35 354.025</b>	UNICOM <b>122.8 (CTAF) ①</b>
--------------------------	--	---------------------------------



NoPT for arrival at SKY VOR/DME on airway radials 105 CW 179.

MSA SKY 25 NM 2500'

3000	SKY ④ 109.2	One Minute Holding Pattern		
<p>AHEAD SKY ⑥</p> <p>MASP VOR/DME SKY 10.6</p> <p>2700'</p> <p>301°</p> <p>121° → 3000'</p> <p>← 301°</p> <p>4.6 NM 6 NM</p>				
CATEGORY	A	B	C	D
CIRCLING	1140-1	550 (600-1)	1140-1½ 550 (600-1½)	1140-2 550 (600-2)

PORT CLINTON, OHIO  
Amdt 9 09211

PORT CLINTON/CARL R. KELLER FIELD (PCW)  
**VOR/DME-A**

41°31'N - 82°52'W

EC-2, 22 OCT 2009 to 19 NOV 2009

EC-2, 22 OCT 2009 to 19 NOV 2009