

WAAS CH 58012 W27A	APP CRS 270°	Rwy ldg 5445 TDZE 588 Apt Elev 590
----------------------------------------	------------------------	---------------------------------------------------------------

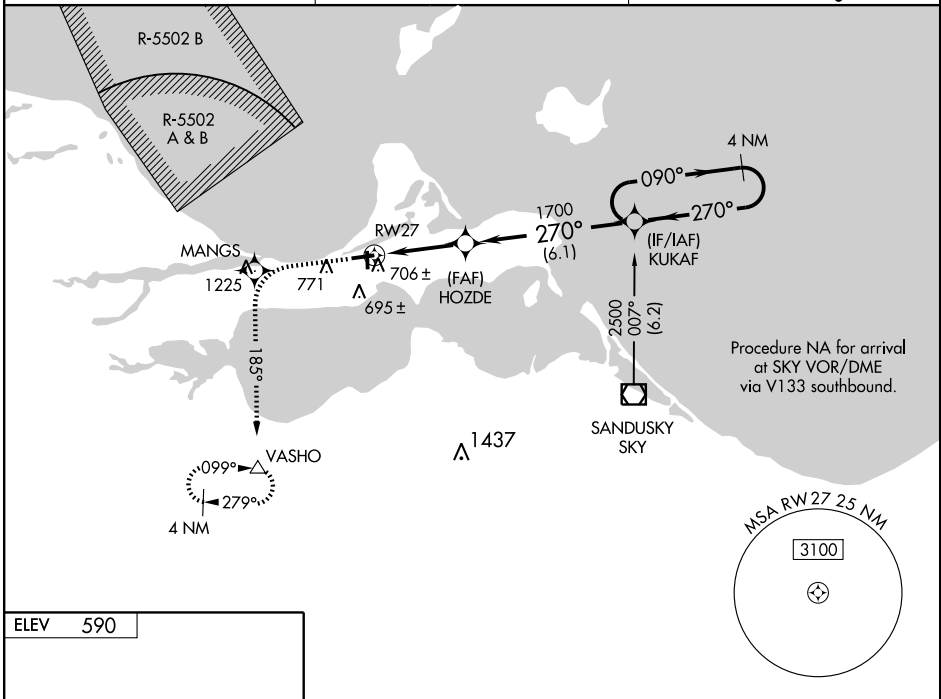
RNAV (GPS) RWY 27

PORT CLINTON/CARL R. KELLER FIELD (PCW)

NA Baro-VNAV NA when using Metcalf Field altimeter setting. For uncompensated Baro-VNAV systems, LNAV/VNAV NA below -16°C (4°F) or above 46°C (114°F). DME/DME RNP-0.3 NA. Visibility reduction by helicopters NA. When local altimeter setting not received, use Metcalf Field altimeter setting and increase all DA 69 feet, and all MDA 80 feet, increase LPV and LNAV/VNAV all Cats visibility ¼ mile, LNAV visibility Cat C and D ¼ mile, and Circling visibility Cat C ¼ mile.

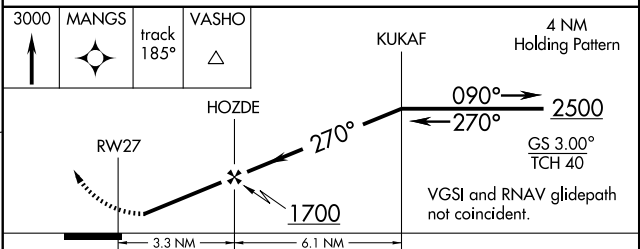
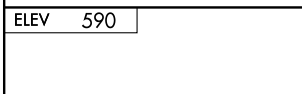
MISSED APPROACH: Climb to 3000 direct MANGS and via track 185° to VASHO and hold, continue climb-in-hold to 3000.

AWOS-3 118.775	CLEVELAND APP CON 126.35 354.025	UNICOM 122.8 (CTAF) ①
--------------------------	--------------------------------------------	---------------------------------



EC-2, 22 OCT 2009 to 19 NOV 2009

EC-2, 22 OCT 2009 to 19 NOV 2009



CATEGORY	A	B	C	D
LPV DA	910-1¼ 322 (400-1¼)			
LNAV/VNAV DA	956-1¼ 368 (400-1¼)			
LNAV MDA	980-1 392 (400-1)			980-1¼ 392 (400-1¼)
CIRCLING	1140-1	550 (600-1)	1140-1½ 550 (600-1½)	1140-2 550 (600-2)