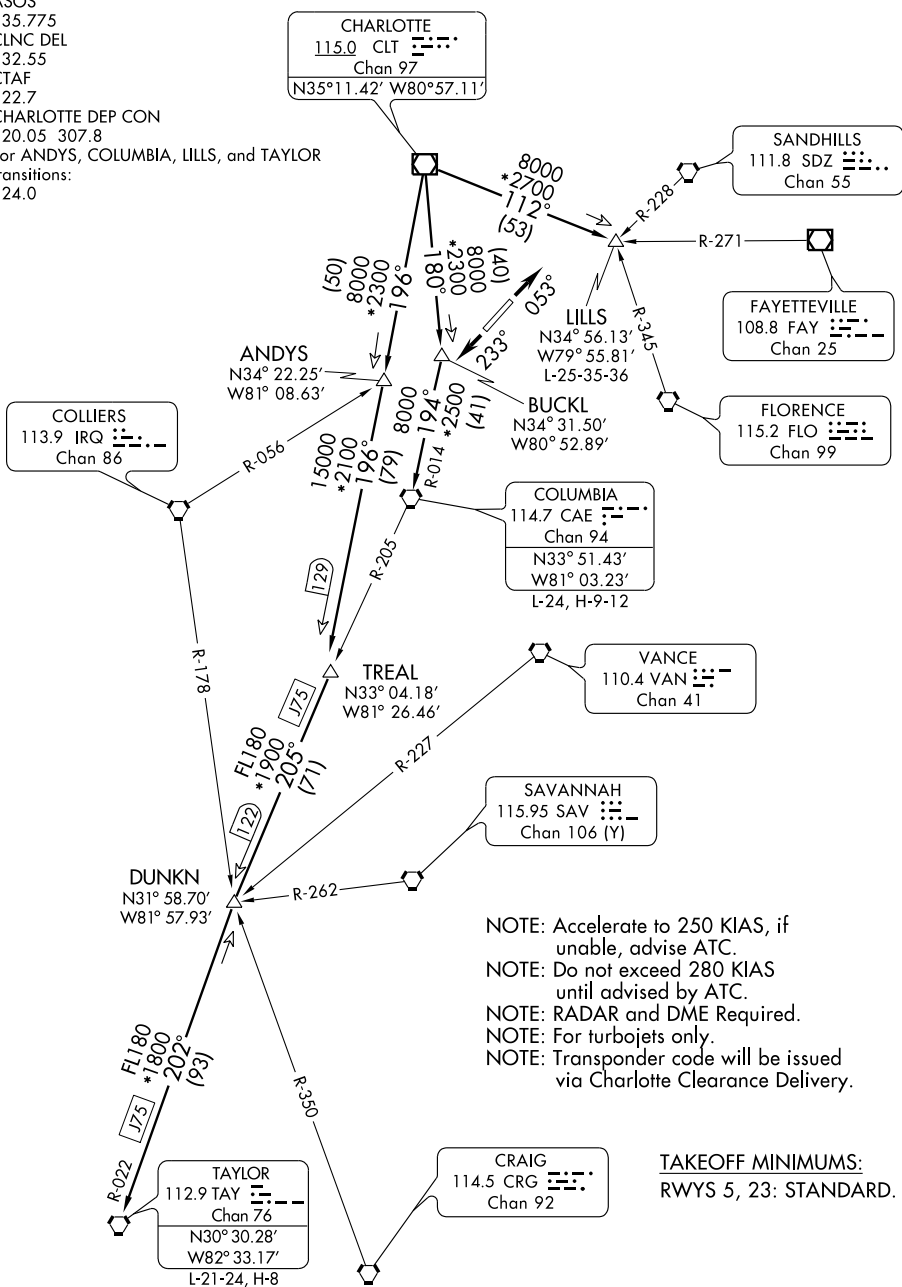


(PAN8.PAN) 09183

PANTHER EIGHT DEPARTURE

CHARLOTTE-MONROE EXECUTIVE (E.Q.Y)
SL-5726 (FAA)
MONROE, NORTH CAROLINA

ASOS
135.775
CLNC DEL
132.55
CTAF
122.7
CHARLOTTE DEP CON
120.05 307.8
For ANDYS, COLUMBIA, LILLS, and TAYLOR
transitions:
124.0



NOTE: Accelerate to 250 KIAS, if unable, advise ATC.
 NOTE: Do not exceed 280 KIAS until advised by ATC.
 NOTE: RADAR and DME Required.
 NOTE: For turbojets only.
 NOTE: Transponder code will be issued via Charlotte Clearance Delivery.

TAKEOFF MINIMUMS:
 RWYS 5, 23: STANDARD.

NOTE: Chart not to scale.

(NARRATIVE ON FOLLOWING PAGE)

PANTHER EIGHT DEPARTURE

(PAN8.PAN) 09183

MONROE, NORTH CAROLINA
CHARLOTTE-MONROE EXECUTIVE (E.Q.Y)

SE-2, 22 OCT 2009 to 19 NOV 2009

SE-2, 22 OCT 2009 to 19 NOV 2009