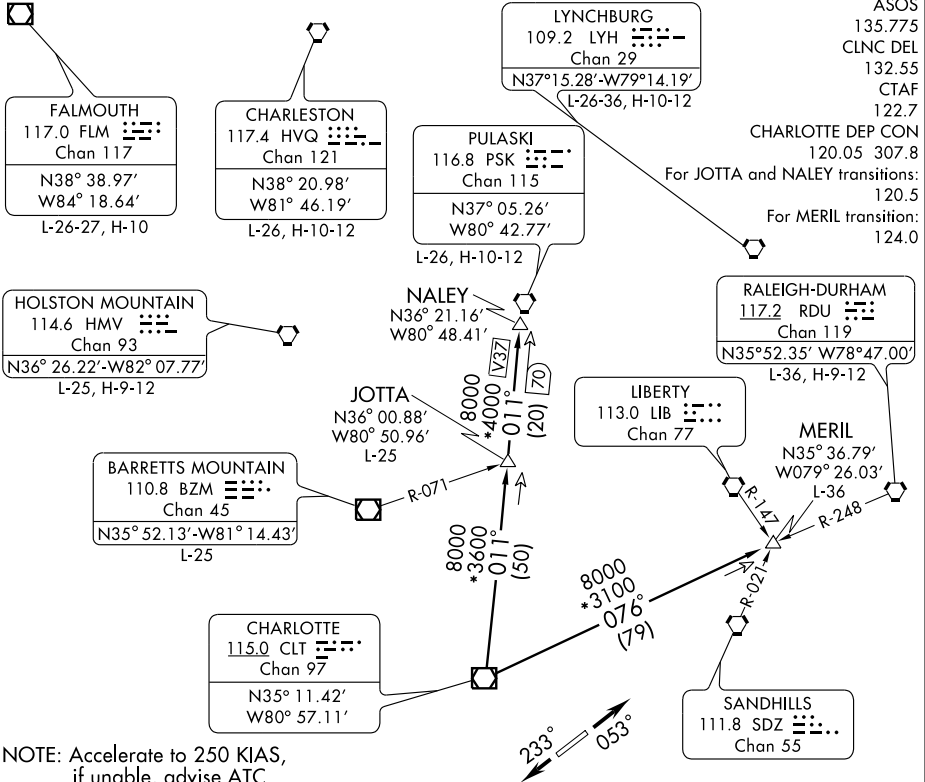


HORNET FOUR DEPARTURE

SL-5726 (FAA) CHARLOTTE-MONROE EXECUTIVE (EQY)
MONROE, NORTH CAROLINA



- NOTE: Accelerate to 250 KIAS, if unable, advise ATC.
- NOTE: Do not exceed 280 KIAS until advised by ATC.
- NOTE: RADAR and DME Required.
- NOTE: For turbojets only.
- NOTE: Transponder code will be issued via Charlotte Clearance Delivery.

TAKEOFF MINIMUMS:
RWY 5, 23: STANDARD.

NOTE: Chart not to scale.

DEPARTURE ROUTE DESCRIPTION

TAKEOFF RWY 5: Climb heading 053°. Thence....

TAKEOFF RWY 23: Climb heading 233°. Thence....

.... Expect radar vectors to intercept filed/assigned transition or enroute fix/navaid. Maintain 3000. Expect filed altitude/flight level 10 minutes after departure.

JOTTA TRANSITION (HOR4.JOTTA): From over CLT VOR/DME via CLT R-011 to JOTTA INT. Thence as filed.

MERIL TRANSITION (HOR4.MERIL): From over CLT VOR/DME via CLT R-076 to MERIL INT. Thence as filed.

NALEY TRANSITION (HOR4.NALEY): From over CLT VOR/DME via CLT R-011 to NALEY INT. Thence as filed.

(NARRATIVE CONTINUED ON FOLLOWING PAGE)

HORNET FOUR DEPARTURE

SE-2, 22 OCT 2009 to 19 NOV 2009

SE-2, 22 OCT 2009 to 19 NOV 2009