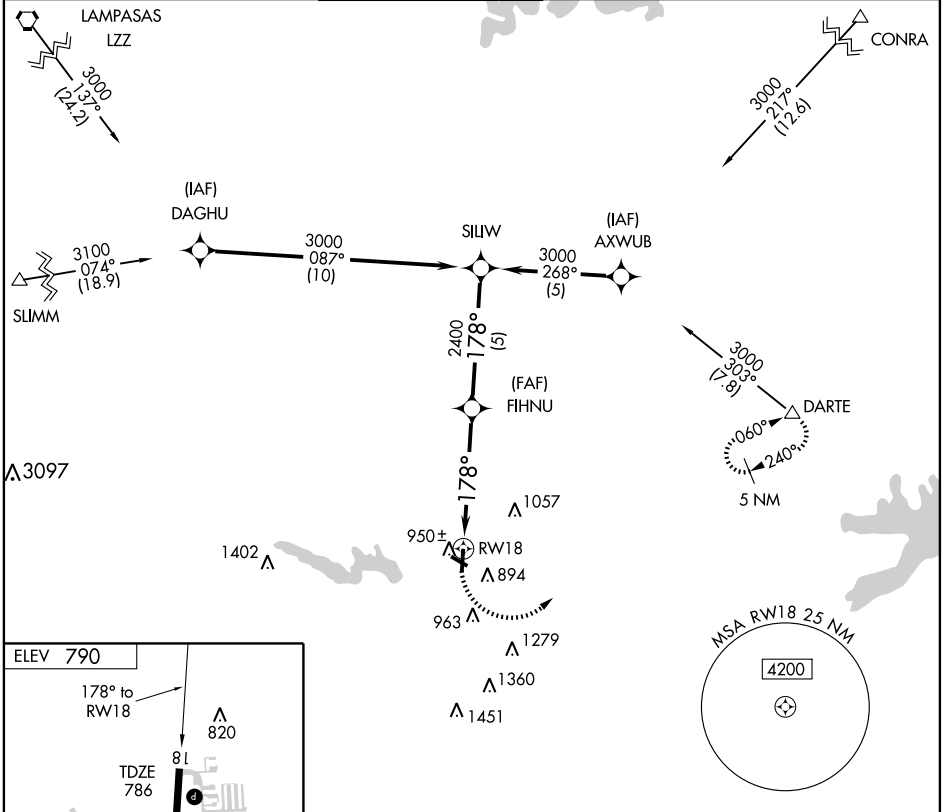


APP CRS <b>178°</b>	Rwy Idg TDZE Apt Elev	<b>5000</b> <b>786</b> <b>790</b>
------------------------	-----------------------------	---

**GPS RWY 18**  
GEORGETOWN MUNI (GTU)

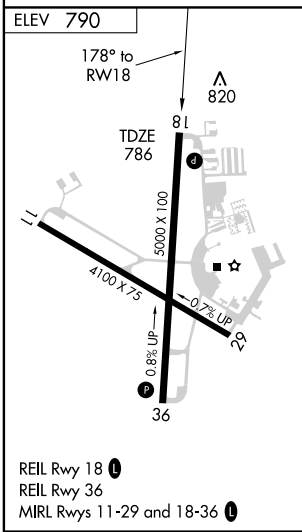
▲ NA		MISSED APPROACH: Climbing left turn to 3000 direct DARTE WP and hold.			
------	--	---	--	--	--

ATIS <b>118.6</b>	AUSTIN APP CON <b>119.0 370.85</b>	<b>GEORGETOWN TOWER * 120.225 (CTAF) ①</b>	GND CON <b>119.12</b>	AUSTIN CLNC DEL <b>121.1</b>	UNICOM <b>123.0</b>
----------------------	---------------------------------------	--	--------------------------	---------------------------------	------------------------



SC-3, 22 OCT 2009 to 19 NOV 2009

SC-3, 22 OCT 2009 to 19 NOV 2009



3000	DARTE △	FIHNU	SILIW	
		2400	3000	Procedure Turn NA
		VGS and descent angles not coincident.		
		5 NM	5 NM	
CATEGORY	A	B	C	D
S-18	1200-1	414 (500-1)	1200-1¼ 414 (500-1¼)	NA
CIRCLING	1260-1	470 (500-1)	1260-1½ 470 (500-1½)	NA