

# RNAV (GPS) RWY 35

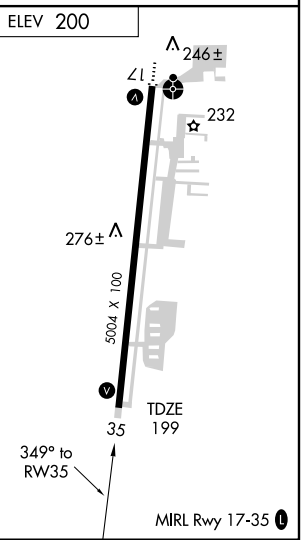
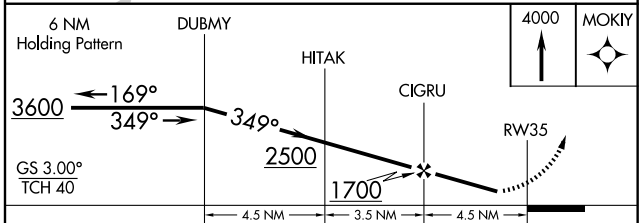
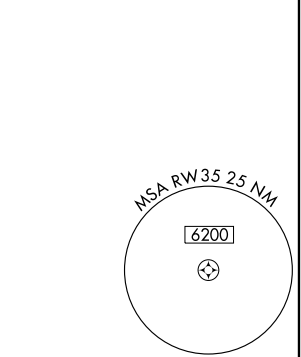
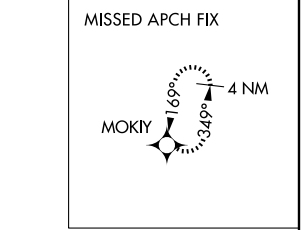
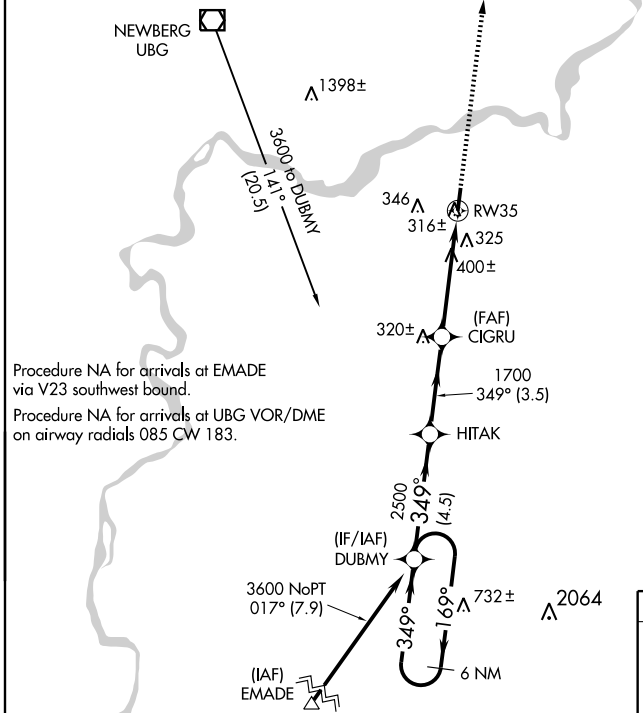
AURORA STATE (UAO)

WAAS CH <b>77508</b> W35A	APP CRS <b>349°</b>	Rwy Idg <b>5004</b> TDZE <b>199</b> Apt Elev <b>200</b>
---------------------------------	------------------------	---

**⚠** DME/DME RNP-0.3 NA. For uncompensated Baro-VNAV systems, LNAV/VNAV NA below -15°C (5°F) or above 48°C (118°F). When local altimeter setting not received, use Mc Minnville Muni altimeter setting and increase all DA 42 feet and MDA 60 feet; increase LPV, LNAV/VNAV visibilities ¼ mile all Cats, increase LNAV Cat D visibility to 1½. Visibility reduction by helicopters NA. Baro-VNAV NA when using Mc Minnville Muni altimeter setting.

**MISSED APPROACH:** Climb to 4000 direct MOKIY and hold, continue climb-in-hold to 4000.

ASOS <b>118.525</b>	PORTLAND APP CON <b>126.0 284.6</b>	CINC DEL <b>119.95</b>	UNICOM <b>122.7</b> (CTAF) <b>0</b>
------------------------	--	---------------------------	--



CATEGORY	A	B	C	D
LPV DA	500-1 301 (300-1)			
LNAV/VNAV DA	604-1½ 405 (500-1½)			
LNAV MDA	700-1 501 (500-1)	700-1½ 501 (500-1½)		
CIRCLING	700-1 500 (500-1)	700-1½ 500 (500-1½)	760-2 560 (600-2)	

NW-1, 22 OCT 2009 to 19 NOV 2009

NW-1, 22 OCT 2009 to 19 NOV 2009