

TROY, ALABAMA

AL-5720 (FAA)

# RNAV (GPS) RWY 32

TROY MUNI (TOI)

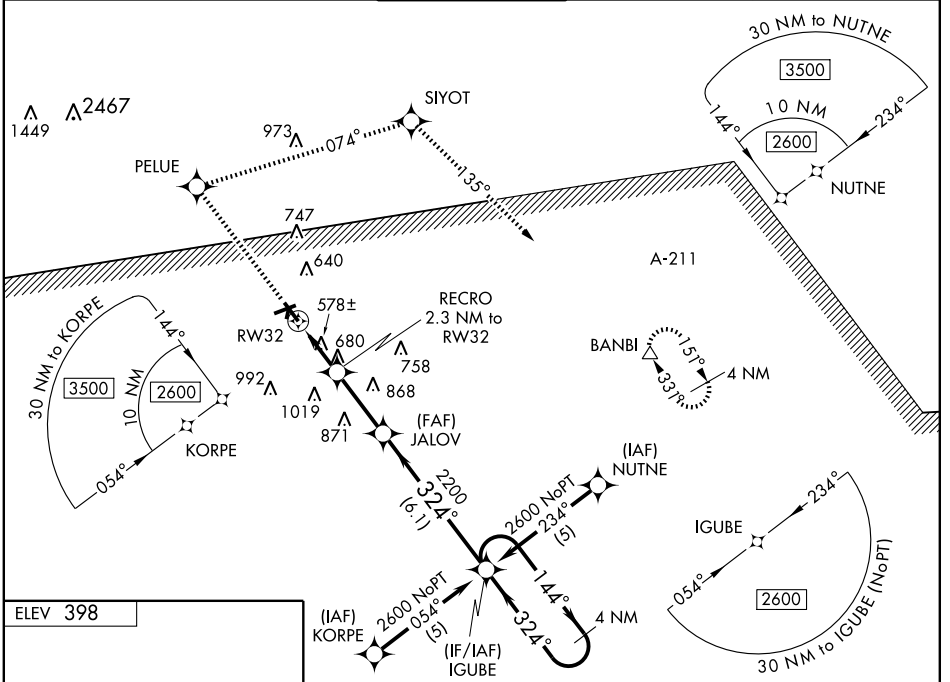
WAAS CH <b>53506</b> <b>W32A</b>	APP CRS <b>324°</b>	Rwy Idg TDZE Apt Elev	<b>5022</b> <b>393</b> <b>398</b>
--	------------------------	-----------------------------	---

**ASR/ PAR**

Circling to Rwy 14 NA at night. When VGSI inop, Circling Rwy 25 NA at night. For uncompensated Baro-VNAV systems, LNAV/VNAV NA below -15°C (5°F) or above 54°C (130°F). DME/DME RNP-0.3 NA. LNAV, VDP, and Baro-VNAV NA when using Montgomery altimeter setting. When local altimeter setting not received, use Montgomery altimeter setting and increase all DAs 101 feet, and all MDAs 120 feet; increase LPV and LNAV/VNAV all Cats. and Circling Cats. C and D visibilities ¼ mile.

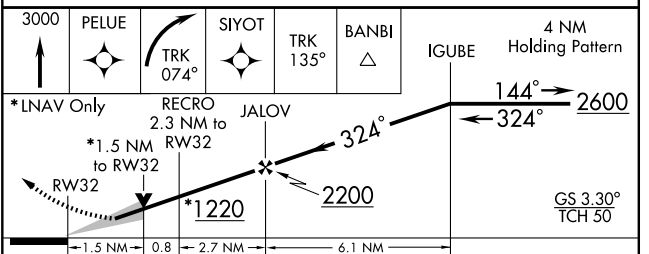
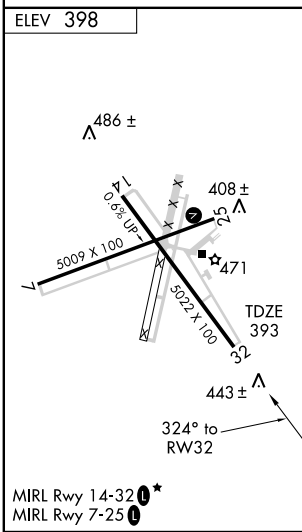
**MISSED APPROACH:** Climb to 3000 direct PELUE and right turn via 074° track to SIYOT and via 135° track to BANBI and hold.

ATIS <b>120.925</b>	CAIRNS APP CON* <b>121.1 319,25</b>	TROY TOWER* <b>124.3 306.9</b>	GND CON <b>121.9 263.125</b>	UNICOM <b>122.8 (CTAF) 0</b>
------------------------	--	-----------------------------------	---------------------------------	---------------------------------



SE-4, 22 OCT 2009 to 19 NOV 2009

SE-4, 22 OCT 2009 to 19 NOV 2009



CATEGORY	A	B	C	D
LPV DA	645-1 252 (300-1)			NA
LNAV/VNAV DA	879-1¾ 486 (500-1¾)			NA
LNAV MDA	940-1	547 (600-1)	940-1½ 547 (600-1½)	940-1¾ 547 (600-1¾)
CIRCLING	940-1	542 (600-1)	940-1½ 542 (600-1½)	980-2 582 (600-2)

TROY, ALABAMA  
Orig 09127

31° 52'N-86° 01'W

# RNAV (GPS) RWY 32

TROY MUNI (TOI)