

# NDB RWY 7

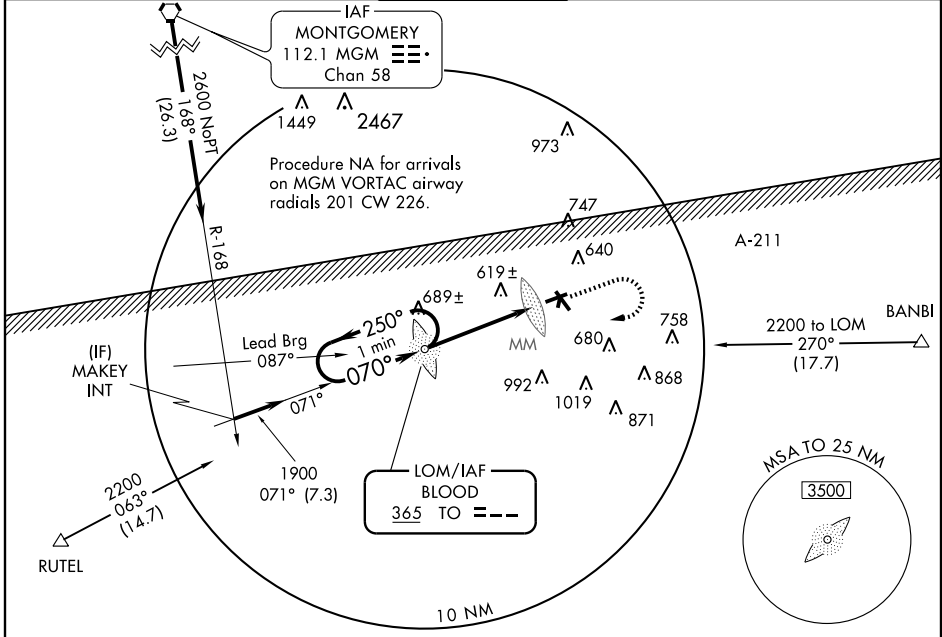
TROY MUNI (TOI)

LOM TO <b>365</b>	APP CRS <b>070°</b>	Rwy Idg <b>5009</b>
		TDZE <b>392</b>
		Apt Elev <b>398</b>

**ASR/PAR** When local altimeter setting not received, use Montgomery altimeter setting and increase all MDAs 120 feet; increase S-7 and Circling Cats. C and D visibilities 1/4 mile.

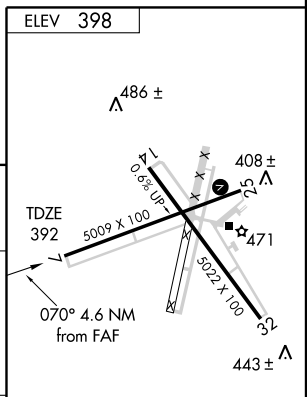
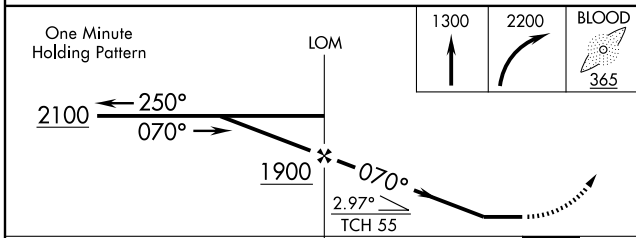
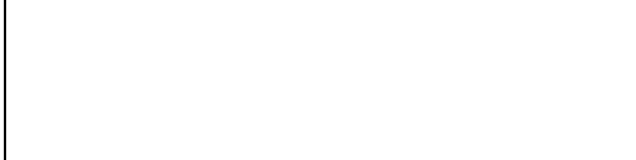
**MISSED APPROACH:** Climb to 1300 then climbing right turn to 2200 direct BLOOD LOM and hold.

ATIS <b>120.925</b>	CAIRNS APP CON* <b>121.1 319.25</b>	TROY TOWER* <b>124.3 306.9</b>	GND CON <b>121.9 263.125</b>	UNICOM <b>122.8 (CTAF) 0</b>
------------------------	--	-----------------------------------	---------------------------------	---------------------------------



SE-4, 22 OCT 2009 to 19 NOV 2009

SE-4, 22 OCT 2009 to 19 NOV 2009



CATEGORY	A	B	C	D
S-7	920-1 528 (600-1)		920-1½ 528 (600-1½)	920-1¾ 528 (600-1¾)
CIRCLING	940-1 542 (600-1)		940-1½ 542 (600-1½)	980-2 582 (600-2)

MIRL Rwy 14-32 0\*

MIRL Rwy 7-25 0

FAF to MAP 4.6 NM

Knots	60	90	120	150	180
Min:Sec	4:36	3:04	2:18	1:50	1:32