

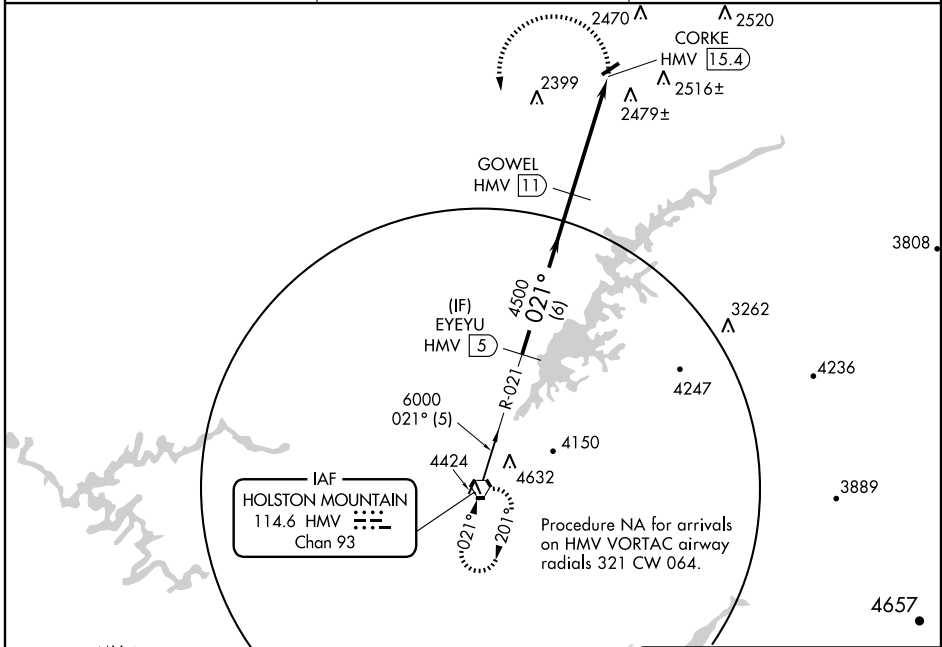
VORTAC HMV 114.6 Chan 93	APP CRS 021°	Rwy ldg TDZE Apt Elev	N/A N/A 2087
--	------------------------	-----------------------------	---

VOR/DME-B
ABINGDON / VIRGINIA HIGHLANDS (VJI)

⚠ When local altimeter setting not received; use Tri-Cities Rgnl TN/VA altimeter setting and increase all MDA 140 feet; increase Cat. A visibility ¼ mile, Cats. C and D visibility ½ mile.

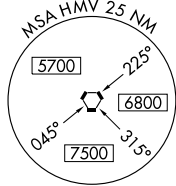
⚠ MISSED APPROACH: Climbing left turn to 6000 via heading 165° and HMV R-021 to HMV VORTAC and hold.

AWOS-3 128.125	TRI-CITY APP CON 128.67 349.0	UNICOM 122.8 (CTAF) ①
--------------------------	---	---------------------------------



NE-3, 22 OCT 2009 to 19 NOV 2009

NE-3, 22 OCT 2009 to 19 NOV 2009



IAF
HOLSTON MOUNTAIN
114.6 HMV
Chan 93

Procedure NA for arrivals on HMV VORTAC airway radials 321 CW 064.

ELEV 2087

VORTAC	EYEYU HMV (5)			
	6000 — 021° — 6000 — 021° — 4500			
Procedure Turn NA	GOWEL HMV (11)			
	CORKE HMV (15.4)			
	5 NM	6 NM	4.4 NM	
CATEGORY	A	B	C	D
CIRCLING	2860-1 773 (800-1)	2860-1¼ 773 (800-1¼)	2860-2¼ 773 (800-2¼)	2860-2½ 773 (800-2½)

