


RNAV (GPS) RWY 24

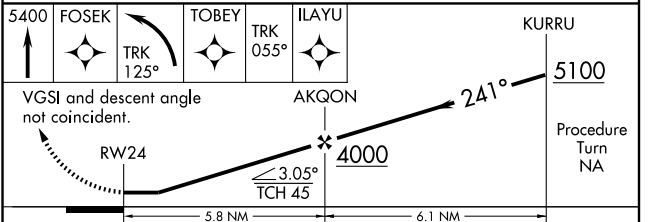
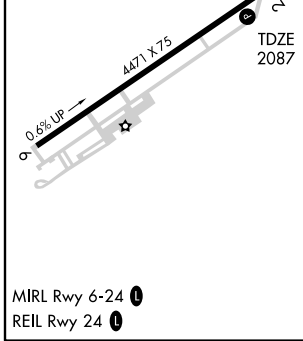
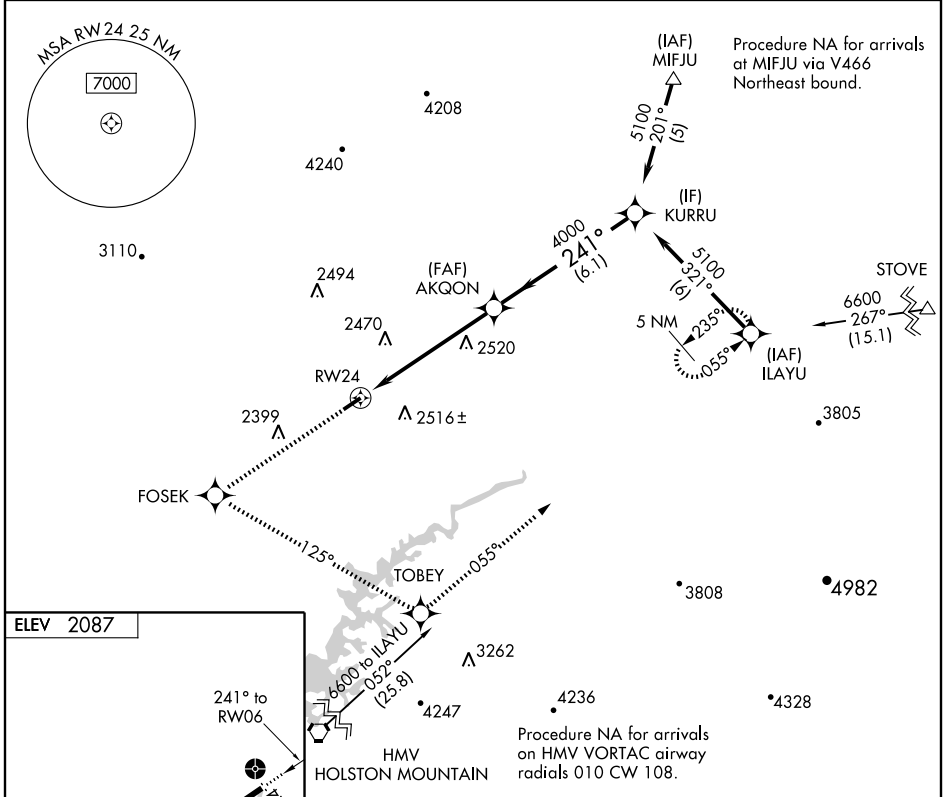
ABINGDON / VIRGINIA HIGHLANDS (VJI)

APP CRS	Rwy Idg	4471
241°	TDZE	2087
	Apt Elev	2087

⚠ Inoperative table does not apply. DME/DME RNP-0.3 NA. Visibility reduction by helicopters NA. When local altimeter setting not received, use Tri-Cities Rgnl TN/VA altimeter setting and increase all MDA 140 feet; increase LNAV Cat. B and Circling Cat. A visibility ¼ mile, increase LNAV and Circling Cat. C/D visibility ½ mile.

ODALS
 MISSED APPROACH: Climb to 5400 direct FOSEK and left turn via track 125° to TOBEY and via track 055° to ILAYU and hold.

AWOS-3 128.125	TRI-CITY APP CON 128.67 349.0	UNICOM 122.8 (CTAF) 
--------------------------	---	---



CATEGORY	A	B	C	D
LNAV MDA	2820-1	733 (800-1)	2820-2 733 (800-2)	2820-2½ 733 (800-2½)
CIRCLING	2860-1 773 (800-1)	2860-1¼ 773 (800-1¼)	2860-2¼ 773 (800-2¼)	2860-2½ 773 (800-2½)

RNAV (GPS) RWY 24

NE-3, 22 OCT 2009 to 19 NOV 2009

NE-3, 22 OCT 2009 to 19 NOV 2009