

RNAV (GPS) RWY 7

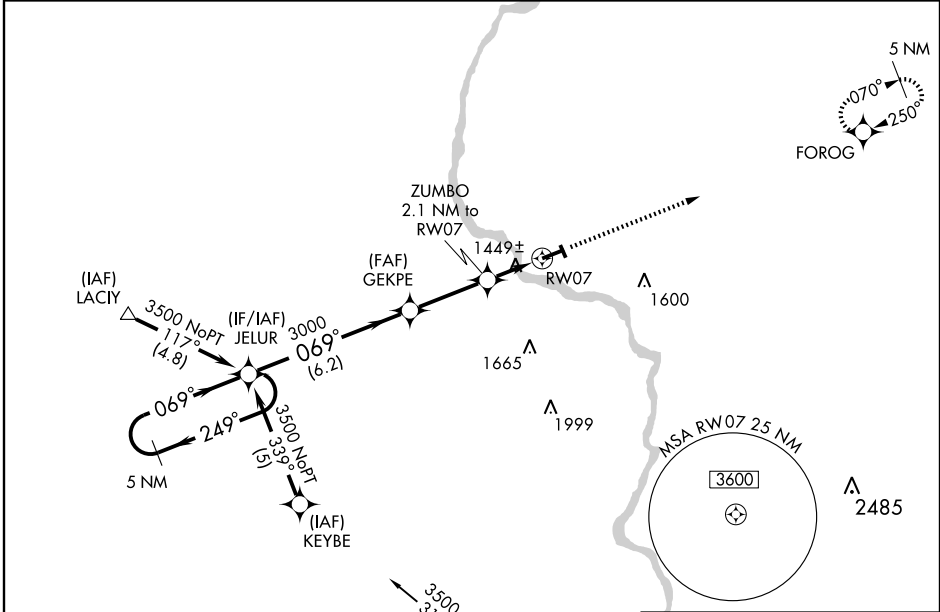
MERRILL MUNI (R.R.L)

WAAS CH 70604 W07A	APP CRS 069°	Rwy Idg TDZE Apt Elev	5100 1318 1318
--	------------------------	-----------------------------	---

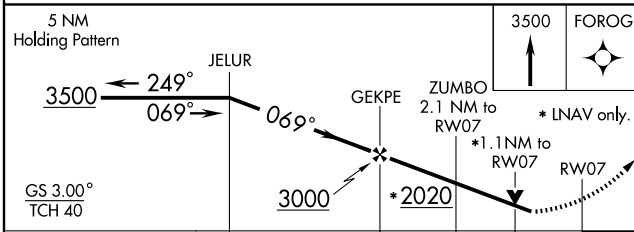
⚠ Circling to Rwy 16-34 NA at night. Baro-VNAV NA when using Wausau altimeter setting. For uncompensated Baro-VNAV systems, LNAV/VNAV NA below -17°C (2°F) or above 54°C (130°F). Visibility reduction by helicopters NA. VDP NA when using Wausau altimeter setting.
 ⚠ If local altimeter setting not received, use Wausau altimeter setting, increase all DAs 55 feet and all MDAs 60 feet. DME/DME RNP-0.3 NA.

MISSED APPROACH:
Climb to 3500 direct FOROG and hold.

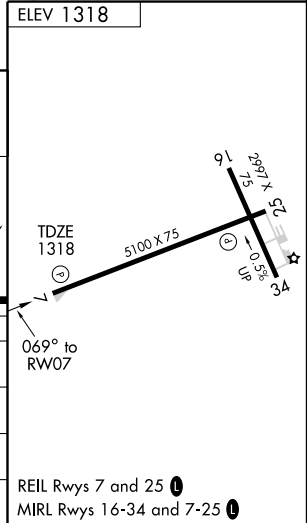
AWOS-3 119.925	MINNEAPOLIS CENTER 124.4 317.7	GCO 121.725	UNICOM 122.8 (CTAF) 📻
--------------------------	--	-----------------------	--



Procedure NA for arrivals at AUV
VORTAC via airway radials 271 CW 005.



CATEGORY	A	B	C	D
LPV DA	1635-1¼	317 (400-1¼)		NA
LNAV/VNAV DA	1754-1½	436 (500-1½)		NA
LNAV MDA	1700-1	382 (400-1)		NA
CIRCLING	1760-1 442 (500-1)	1780-1 462 (500-1)	1780-1½ 462 (500-1½)	NA



EC-3, 22 OCT 2009 to 19 NOV 2009

EC-3, 22 OCT 2009 to 19 NOV 2009