

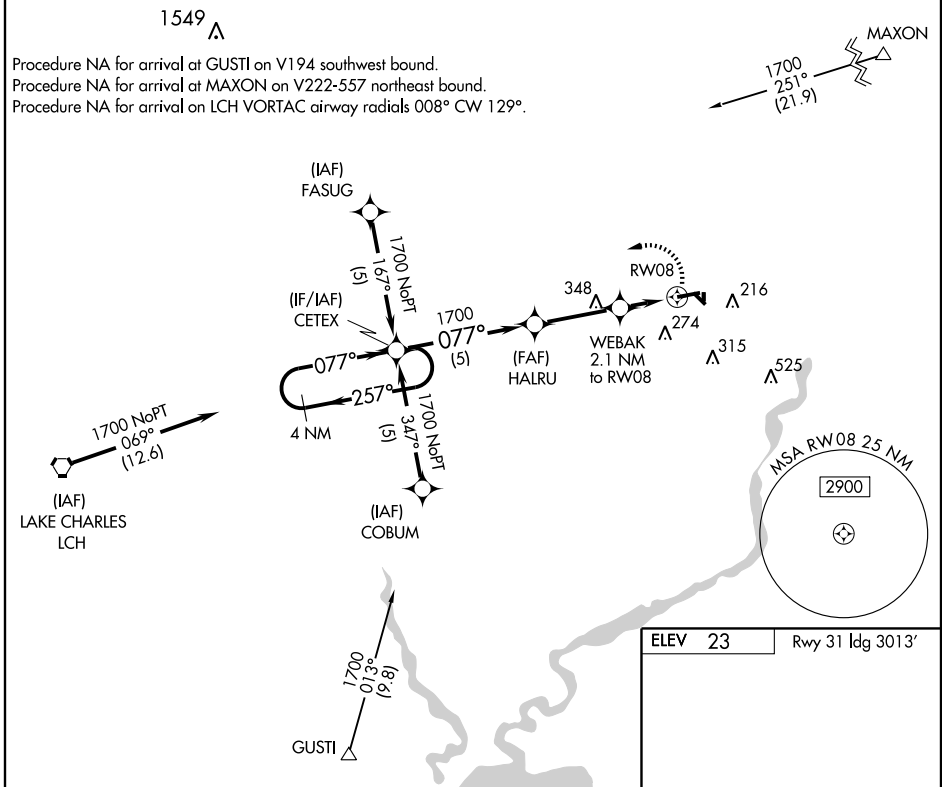
# RNAV (GPS) RWY 8

JENNINGS (3R7)

|             |          |             |
|-------------|----------|-------------|
| APP CRS     | Rwy Idg  | <b>5002</b> |
| <b>077°</b> | TDZE     | <b>17</b>   |
|             | Apt Elev | <b>23</b>   |

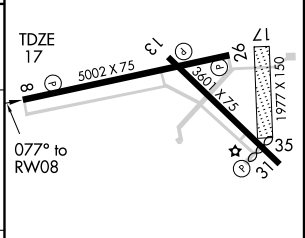
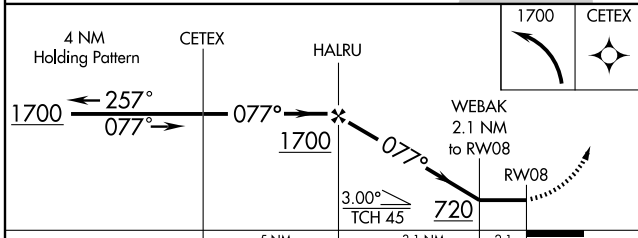
**▽** Use Lake Charles Rgnl altimeter setting.  
**△** NA GPS or RNP-0.3 required. DME/DME RNP-0.3 NA. MISSED APPROACH: Climbing left turn to 1700 direct CETEX WP and hold.

LAKE CHARLES APP CON \* **119.8 282.3** UNICOM **122.8** (CTAF) **0**



SC-4, 22 OCT 2009 to 19 NOV 2009

SC-4, 22 OCT 2009 to 19 NOV 2009



| CATEGORY | A                 | B                   | C  | D  |
|----------|-------------------|---------------------|----|----|
| LNVA MDA | 460-1 443 (500-1) | 460-1¼ 443 (500-1¼) | NA | NA |
| CIRCLING | 640-1 617 (700-1) | 660-1¾ 637 (700-1¾) | NA | NA |

REIL Rwy 8, 26, 13, and 31 **0**  
 MIRL Rwy 8-26 and 13-31 **0**