

RNAV (GPS) RWY 28

DENVER/CENTENNIAL (APA)

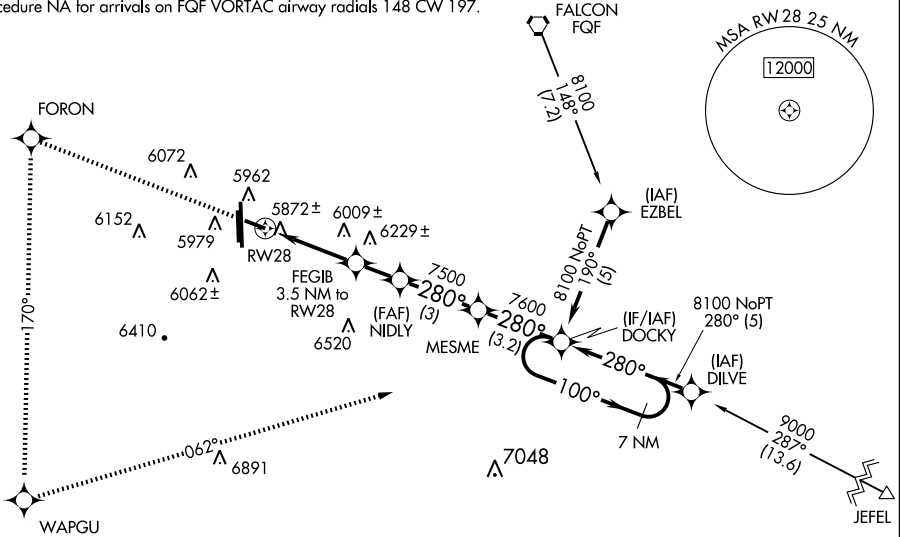
WAAS CH 82107 W28A	APP CRS 280°	Rwy Idg TDZE Apt Elev	4800 5813 5885
--	------------------------	-----------------------------	---

▼ When local altimeter setting not received, use Denver Intl altimeter setting and increase all DA 108 feet and all MDA 120 feet; increase LPV all Cats visibility ¼ mile, increase LNAV/VNAV all Cats visibility ½ mile, LNAV Cats C/D visibility ¼ mile and circling Cat C visibility ½ mile, and Cat D visibility ¼ mile.
For uncompensated Baro-VNAV systems, LNAV/VNAV NA below -26°C (-14°F) or above 37°C (98°F). VDP and Baro VNAV NA when using Denver Intl altimeter setting. Visibility reduction by helicopters NA. DME/DME RNP-0.3 NA.

MISSED APPROACH: Climb to 9000 direct FORON and left turn via 170° track to WAPGU and left turn via 062° track to DOCKY and hold.

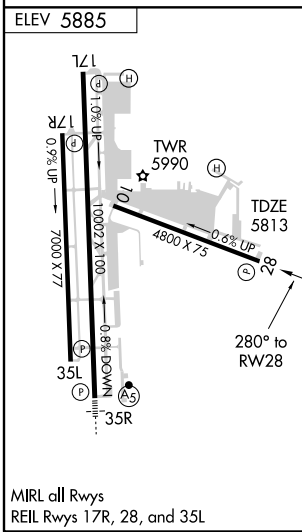
ATIS 120.3	DENVER APP CON 132.75 269.3	CENTENNIAL TOWER 118.9	GND CON 121.8	CLNC DEL 128.6
----------------------	---------------------------------------	----------------------------------	-------------------------	--------------------------

Procedure NA for arrivals on FQG VORTAC airway radials 148 CW 197.



SW-1, 22 OCT 2009 to 19 NOV 2009

SW-1, 22 OCT 2009 to 19 NOV 2009



	9000	FORON	WAPGU	DOCKY	7 NM Holding Pattern
	↑	170° track	062° track		
*LNAV only					
		RW28	FEGIB 3.5 NM to RW28	NIDLY	MESME
			*1 NM to RW28		
			6940*	7500	8100
				7600	100° track
					280° track
					VGSI and RNAV glidepath not coincident.
					GS 3.00°
					TCH 30
	1 NM	2.5 NM	1.7 NM	3 NM	3.2 NM
CATEGORY	A	B	C	D	
LPV DA		6104-1¼	291 (300-1¼)		
LNAV/VNAV DA		6152-1¼	339 (300-1¼)		
LNAV MDA	6260-1	447 (400-1)	6260-1¼	447 (400-1¼)	6260-1½
				447 (400-1½)	447 (400-1½)
CIRCLING	6440-1	555 (600-1)	6440-1½	555 (600-1½)	6560-2¼
					675 (700-2¼)