

# PIKES FOUR DEPARTURE

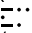
SL-5715 (FAA)

DENVER/CENTENNIAL (APA)  
DENVER, COLORADO

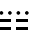
ATIS 120.3  
CLNC DEL  
128.6  
DENVER DEP CON  
132.75 269.3

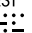
### TAKE-OFF MINIMUMS

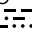
Rwy 10, 28, 35L/R: Standard.  
Rwy 17L/R: 600-2 or standard  
with minimum climb of 240' per  
NM to 6600'.

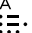
DENVER  
117.9 DEN   
Chan 126  
N39°48.75'-W104°39.65'

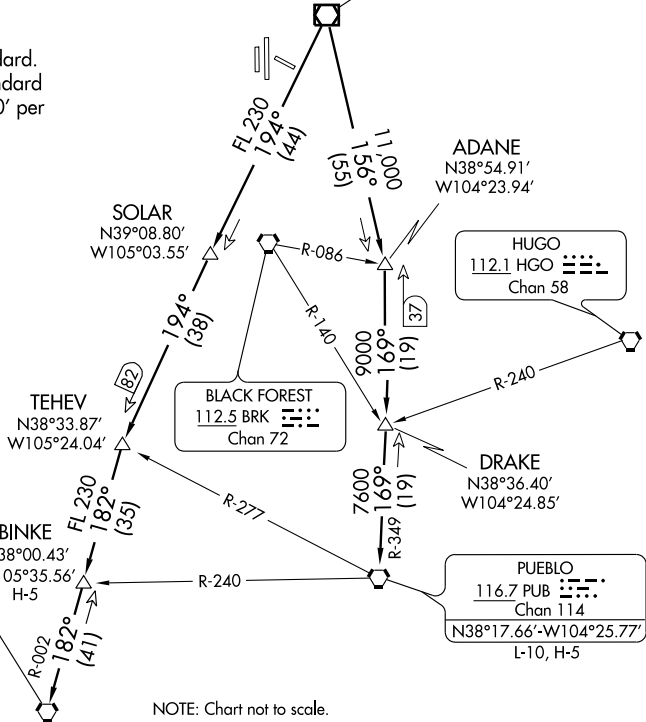
ADANE  
N38°54.91'  
W104°23.94'

HUGO  
112.1 HGO   
Chan 58

BLACK FOREST  
112.5 BRK   
Chan 72

PUEBLO  
116.7 PUB   
Chan 114  
N38°17.66'-W104°25.77'  
L-10, H-5

ALAMOSA  
113.9 ALS   
Chan 86  
N37°20.95'-W105°48.93'  
L-8-9, H-4-5



SW-1, 22 OCT 2009 to 19 NOV 2009

SW-1, 22 OCT 2009 to 19 NOV 2009

### DEPARTURE ROUTE DESCRIPTION

Fly assigned heading and altitude for radar vectors to assigned transition. Expect filed altitude 10 minutes after departure.

**LOST COMMUNICATIONS:** If no transmissions are received within one minute after departure, maintain assigned heading until 7000 feet, then climb to filed altitude via direct DEN VOR/DME, thence via assigned transition. If filed altitude is above 10,000 feet, cross DEN VOR/DME at or above 11,000 feet.

**ALAMOSA TRANSITION (PIKES4.ALS):** From over DEN VOR/DME via DEN R-194 and ALS R-002 to ALS VORTAC.

**BINKE TRANSITION (PIKES4.BINKE):** From over DEN VOR/DME via DEN R-194 and ALS R-002 to BINKE INT.

**PUEBLO TRANSITION (PIKES4.PUB):** From over DEN VOR/DME via DEN R-156 and PUB R-349 to PUB VORTAC.

# PIKES FOUR DEPARTURE