

VIVIAN, LOUISIANA

AL-5713 (FAA)

VOR/DME-A

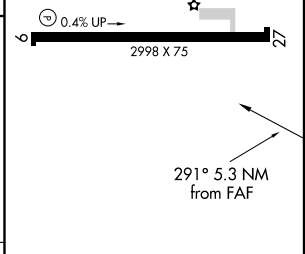
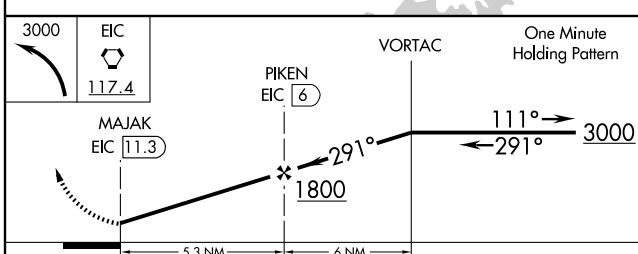
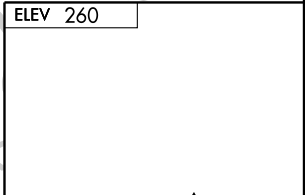
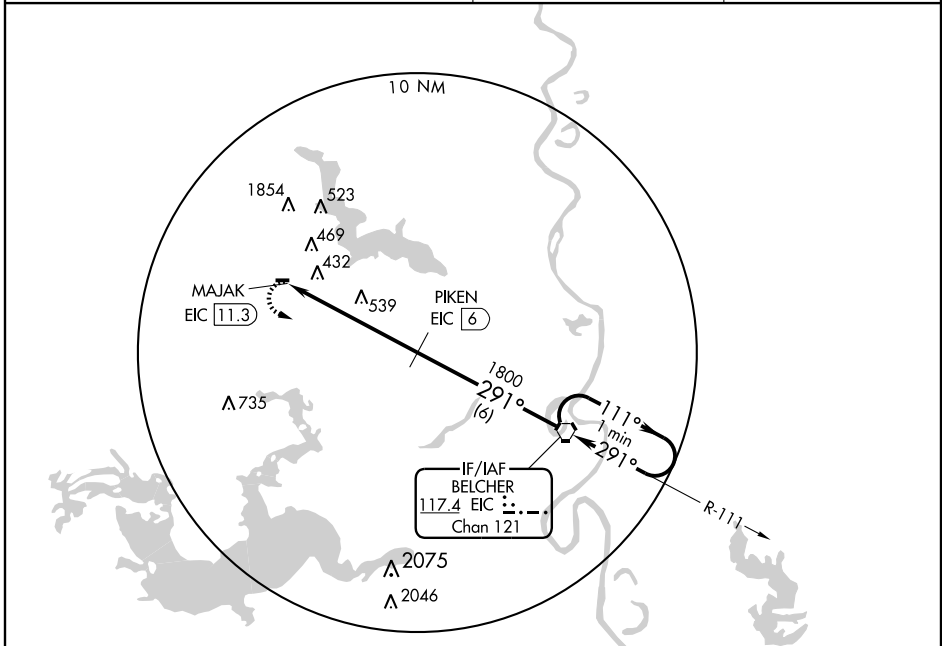
VIVIAN (3F4)

VORTAC EIC 117.4 Chan 121	APP CRS 291°	Rwy Idg TDZE Apt Elev	N/A N/A 260
--	------------------------	-----------------------------	--------------------------

⚠ Circling NA north of Rwy 9-27. Use Shreveport Rgnl altimeter setting; when not received, use Shreveport Downtown altimeter setting.

MISSED APPROACH: Climbing left turn to 3000 direct EIC VORTAC and hold.

SHREVEPORT APP CON 119.9 335.55	UNICOM 122.8 (CTAF) 0	GCO 135.075
---	---------------------------------	-----------------------



CATEGORY	A	B	C	D
CIRCLING	860-1	600 (600-1)	880-1 3/4 620 (700-1 3/4)	NA

MIRL Rwy 9-27 0
REIL Rwy 9 0

SC-4, 22 OCT 2009 to 19 NOV 2009

SC-4, 22 OCT 2009 to 19 NOV 2009

VIVIAN, LOUISIANA
Amdt 3A 09127

32°52'N-94°01'W

VOR/DME-A

VIVIAN (3F4)