

VIVIAN, LOUISIANA

AL-5713 (FAA)

RNAV (GPS) RWY 9

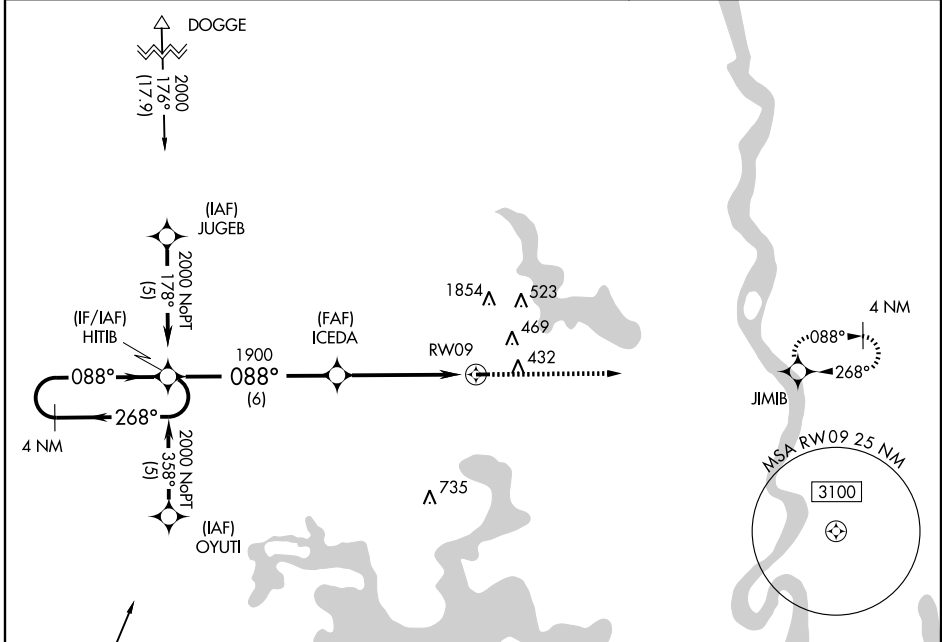
VIVIAN (3F4)

APP CRS	Rwy Idg	2998
088°	TDZE	260
	Apt Elev	260

NA Circling NA north of Rwy 9-27. DME/DME RNP-0.3 NA. Use Shreveport Rgnl altimeter setting; when not received, use Shreveport Downtown altimeter setting.

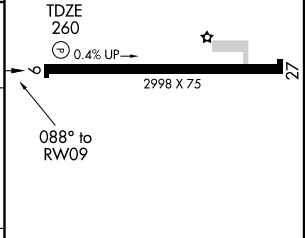
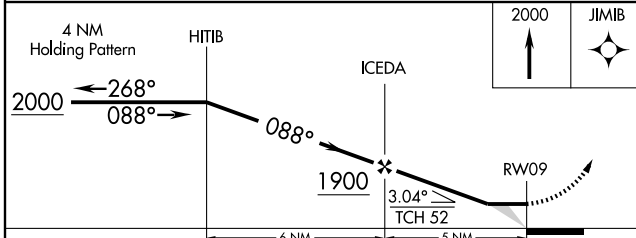
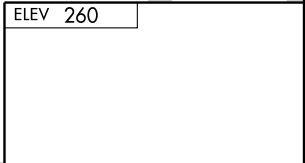
MISSED APPROACH: Climb to 2000 direct JIMIB and hold.

SHREVEPORT APP CON 119.9 335.55	UNICOM 122.8 (CTAF) 0	GCO 135.075
---	--	-----------------------



SC-4, 22 OCT 2009 to 19 NOV 2009

SC-4, 22 OCT 2009 to 19 NOV 2009



CATEGORY	A	B	C	D
RNAV MDA	860-1	600 (600-1)	860-1½ 600 (600-1½)	NA
CIRCLING	860-1	600 (600-1)	880-1¾ 620 (700-1¾)	NA

MIRL Rwy 9-27 **0**
REIL Rwy 9 **0**

VIVIAN, LOUISIANA
Orig-A 09127

32°52'N-94°01'W

RNAV (GPS) RWY 9

VIVIAN (3F4)