

SHELDON, IOWA

AL-5712 (FAA)

RNAV (GPS) RWY 33

SHELDON MUNI (SHL)

APP CRS 330°	Rwy Idg 4199
	TDZE 1418
	Apt Elev 1419

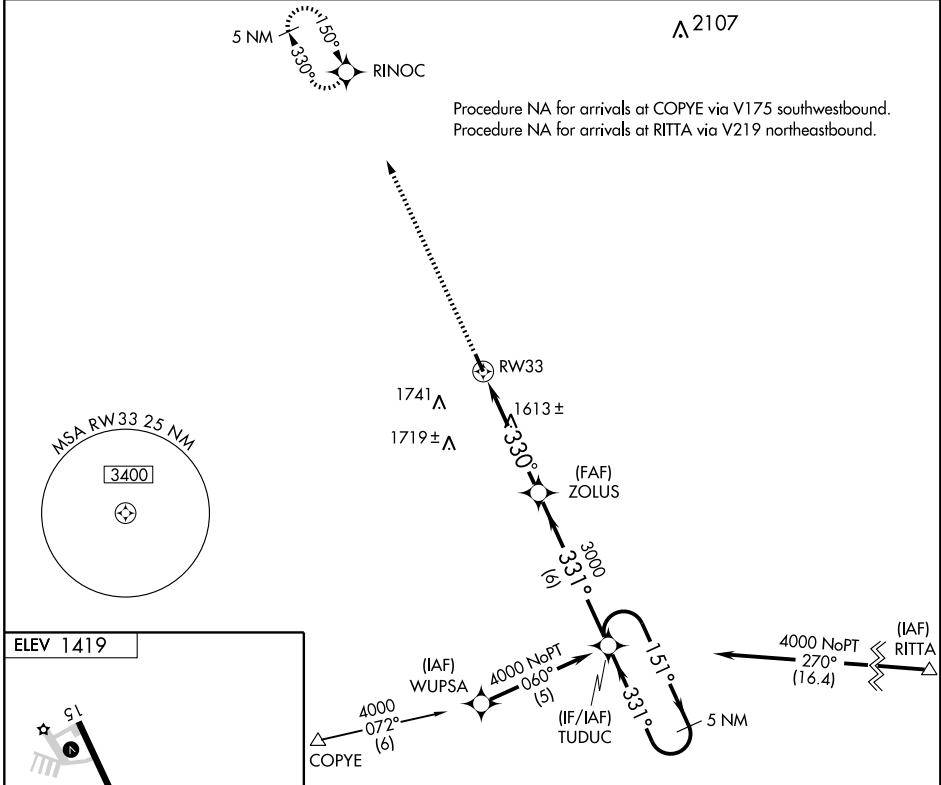
⚠ DME/DME RNP-0.3 NA. Circling to Rwy 15 NA at night.
 If local altimeter setting not received, use Orange City Muni altimeter setting and increase all MDAs 40 feet.
 VDP NA when using Orange City Muni altimeter setting.

MISSED APPROACH: Climb to 4000 direct RINOC and hold.

AWOS-3
119.775

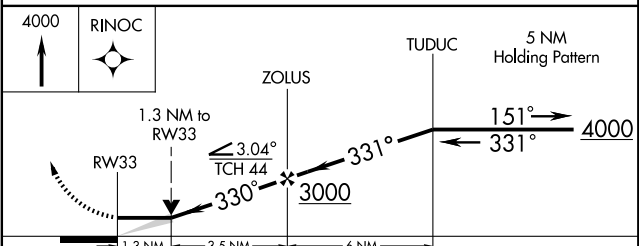
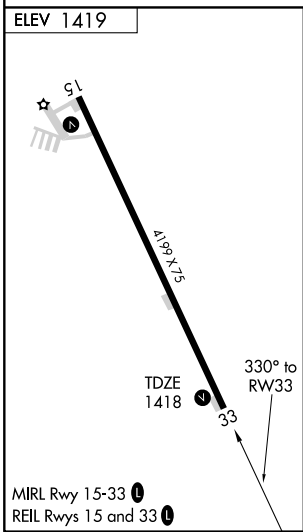
FORT DODGE RADIO
122.15

UNICOM
122.8 (CTAF)



NC-3, 22 OCT 2009 to 19 NOV 2009

NC-3, 22 OCT 2009 to 19 NOV 2009



CATEGORY	A	B	C	D
LNNAV MDA	1880-1	462 (500-1)	1880-1¼ 462 (500-1¼)	1880-1½ 462 (500-1½)
CIRCLING	1880-1	461 (500-1)	1880-1½ 461 (500-1½)	2100-2¼ 681 (700-2¼)

SHELDON, IOWA
Orig 05356

43°13'N-95°50'W

RNAV (GPS) RWY 33