

SHELDON, IOWA

AL-5712 (FAA)

NDB RWY 33

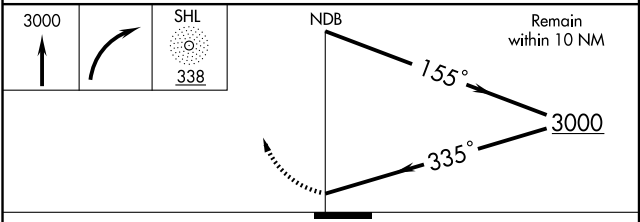
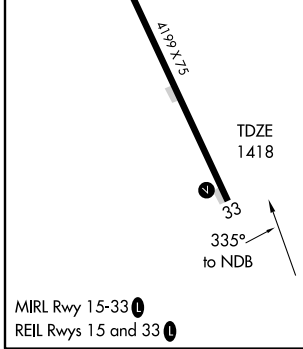
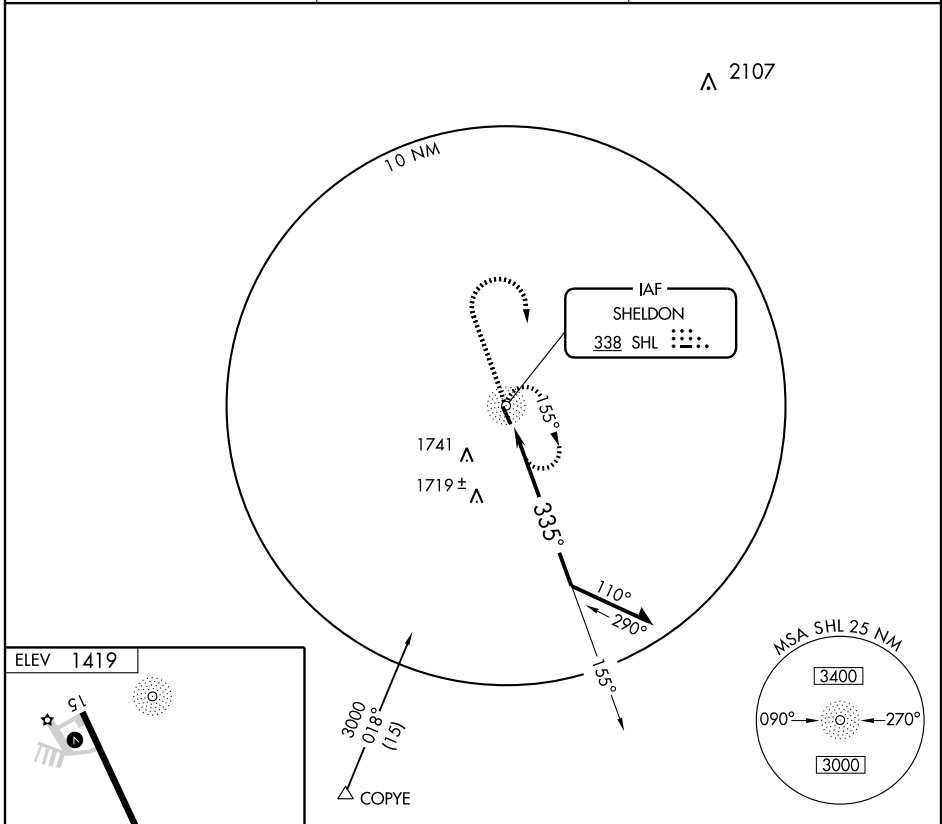
SHELDON MUNI (SHL)

NDB SHL 338	APP CRS 335°	Rwy Idg 4199
		TDZE 1418
		Apt Elev 1419

▲ NA If local altimeter setting not received, use Orange City Muni altimeter setting and increase all MDAs 40 feet.

MISSED APPROACH: Climb to 3000 then right turn direct SHL NDB and hold.

AWOS-3 119.775	FORT DODGE RADIO 122.15	UNICOM 122.8 (CTAF)
--------------------------	-----------------------------------	-------------------------------



CATEGORY	A	B	C	D
S-33	2100-1	682 (700-1)	2100-2 682 (700-2)	2100-2½ 682 (700-2½)
CIRCLING	2100-1	681 (700-1)	2100-2 681 (700-2)	2100-2½ 681 (700-2½)

SHELDON, IOWA
Amdt 7 09071

43°13'N - 95°50'W

SHELDON MUNI (SHL)

NDB RWY 33

NC-3, 22 OCT 2009 to 19 NOV 2009

NC-3, 22 OCT 2009 to 19 NOV 2009