

RNAV (GPS) RWY 5

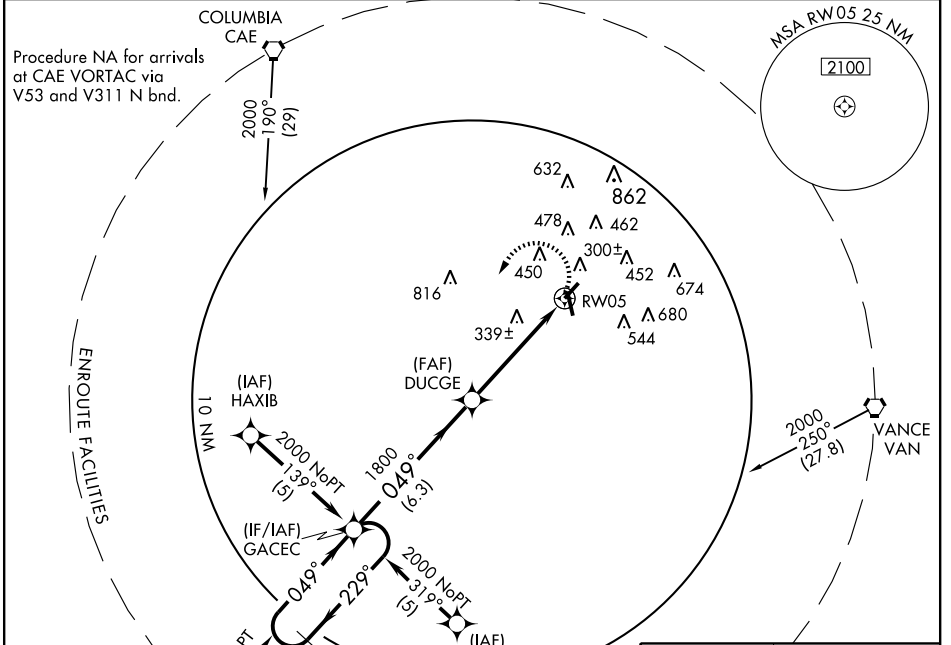
ORANGEBURG MUNI (OGB)

APP CRS	Rwy Idg	4500
049°	TDZE	191
	Apt Elev	195

▼ If local altimeter setting not received, use Columbia Metropolitan altimeter setting and increase all MDAs 80 feet. Straight-in procedure NA at night. VDP NA when using Columbia Metropolitan altimeter setting. DME/DME RNP-0.3 NA.

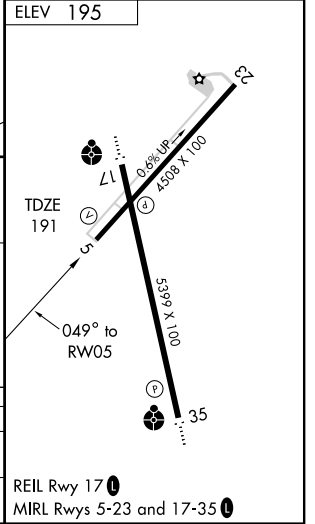
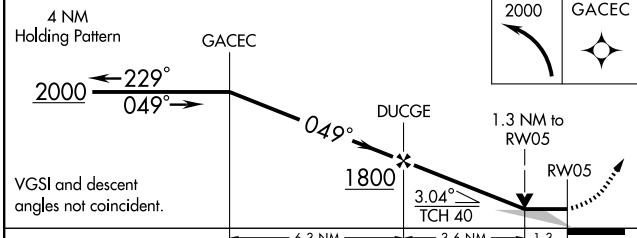
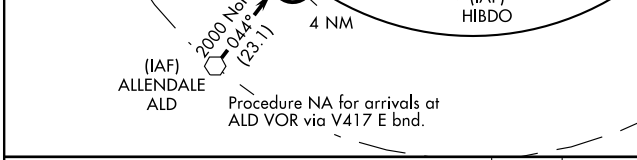
MISSED APPROACH: Climbing left turn to 2000 direct GACEC and hold.

ASOS 118.525	COLUMBIA APP CON 124.15 338.2	UNICOM 122.7 (CTAF)
------------------------	---	-------------------------------



SE-2, 22 OCT 2009 to 19 NOV 2009

SE-2, 22 OCT 2009 to 19 NOV 2009



CATEGORY	A	B	C	D
LNNAV MDA	600-1	409 (500-1)	600-1¼	409 (500-1¼)
CIRCLING	720-1 525 (600-1)	800-1 605 (700-1)	800-1¾ 605 (700-1¾)	900-2¼ 705 (800-2¼)

REIL Rwy 17
MIRL Rwy 5-23 and 17-35