

RNAV (GPS) RWY 23

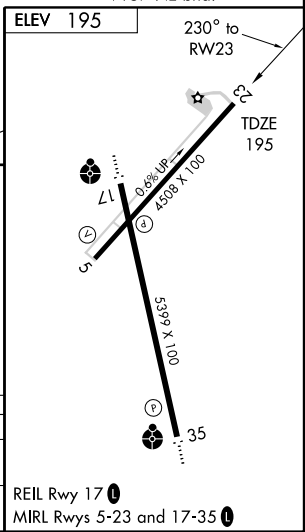
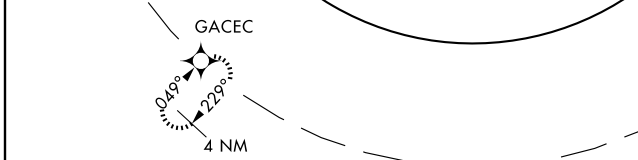
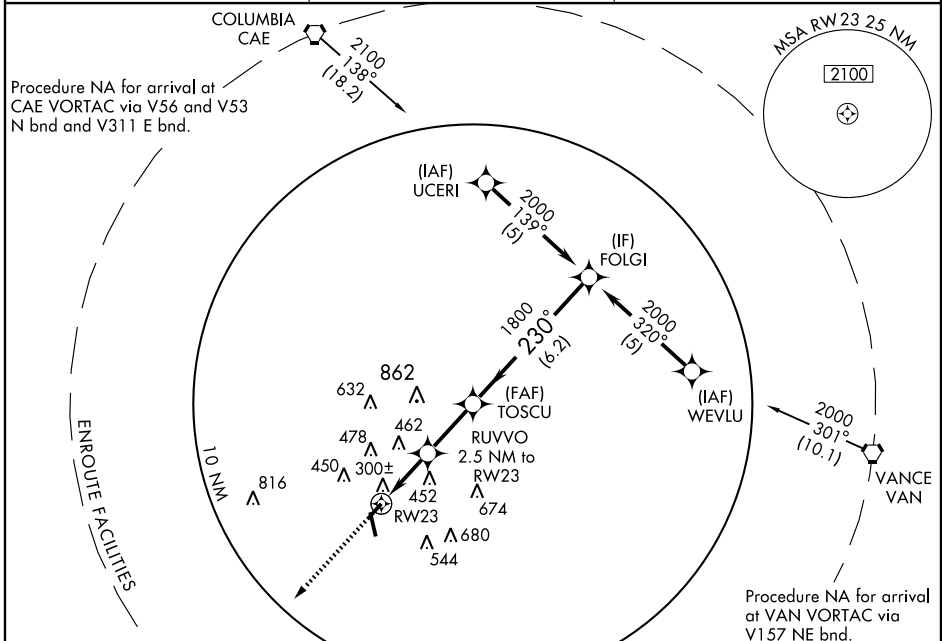
ORANGEBURG MUNI (OGB)

APP CRS	Rwy Idg	4500
230°	TDZE	195
	Apt Elev	195

▼ If local altimeter setting not received, use Columbia Metropolitan altimeter setting and increase all MDAs 80 feet. VDP NA when using Columbia Metropolitan altimeter setting. DME/DME RNP-0.3 NA. Straight-in procedure NA at night.

MISSED APPROACH: Climb to 2000 direct GACEC and hold.

ASOS 118.525	COLUMBIA APP CON 124.15 338.2	UNICOM 122.7 (CTAF)
------------------------	---	-------------------------------



2000	GACEC	TOSCU	FOLGI
↑	✧		
		RUVVO 2.5 NM to RWY23	2000
		1.4 NM to RWY23	Procedure Turn NA
		1020	
		3.04° TCH 40	
		1.4	1.1 NM
		2.4 NM	6.2 NM
CATEGORY	A	B	C
LNVA MDA	680-1	485 (500-1)	680-1½
	525 (600-1)	605 (700-1)	485 (500-1½)
CIRCLING	720-1	800-1	800-1¾
	525 (600-1)	605 (700-1)	605 (700-1¾)
			900-2¼
			705 (800-2¼)
			REIL Rwy 17
			MIRL Rlys 5-23 and 17-35

SE-2, 22 OCT 2009 to 19 NOV 2009

SE-2, 22 OCT 2009 to 19 NOV 2009