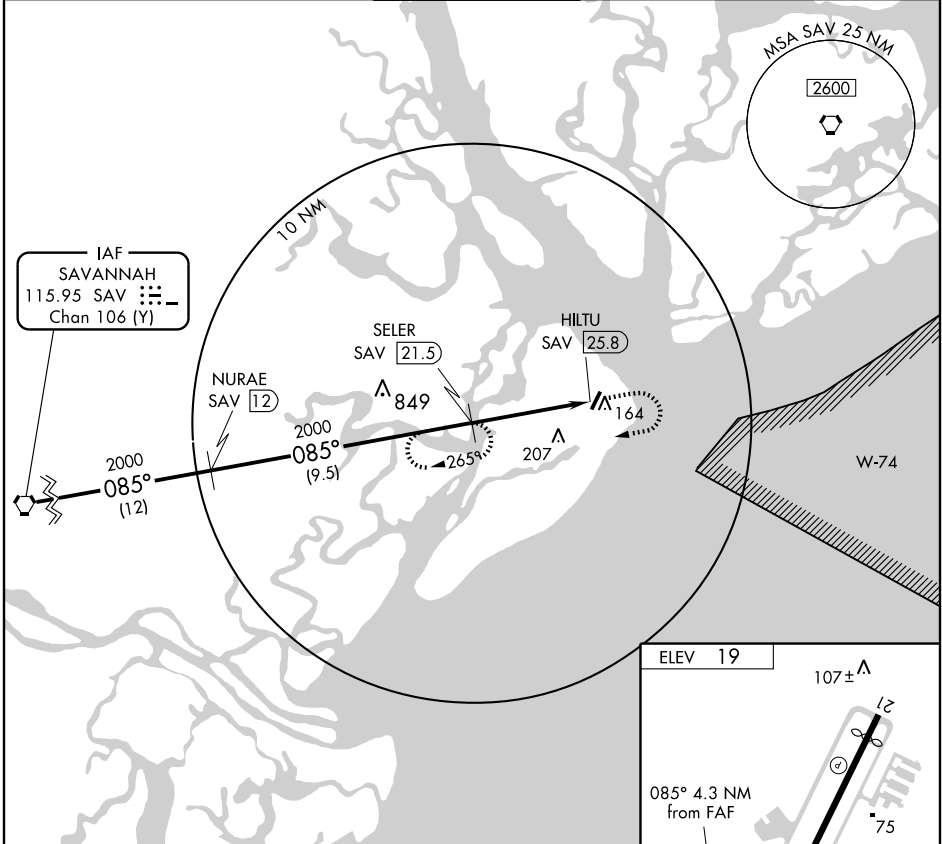


VORTAC SAV 115.95 Chan 106 (Y)	APP CRS 085°	Rwy Idg TDZE Apt Elev	N/A N/A 19
--	------------------------	-----------------------------	---------------------------------------

VOR/DME-A
HILTON HEAD (HXD)

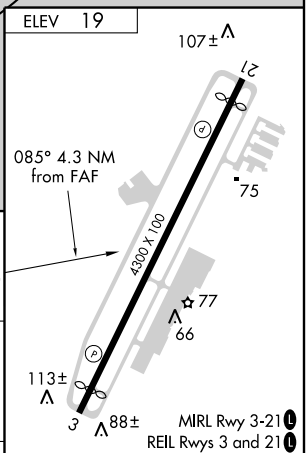
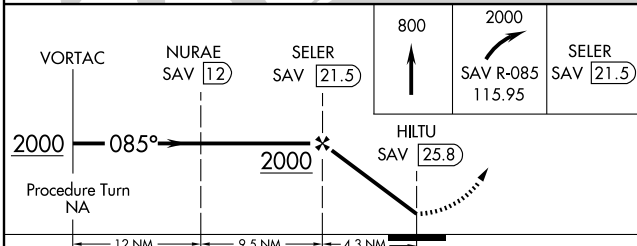
<p>▽ Use Savannah altimeter setting.</p> <p>▲ NA</p>	<p>MISSED APPROACH: Climb to 800 then climbing right turn to 2000 direct SELER/21.5 DME and hold.</p>
--	--

ATIS 121.4	SAVANNAH APP CON ★ 125.3 371.875	HILTON HEAD TOWER ★ 118.975 (CTAF) 0	GND CON 121.1	CLNC DEL 121.1
----------------------	--	--	-------------------------	--------------------------



SE-2, 22 OCT 2009 to 19 NOV 2009

SE-2, 22 OCT 2009 to 19 NOV 2009



	<table border="1"> <tr> <td>800</td> <td>2000</td> <td>SELER SAV (21.5)</td> </tr> <tr> <td>↑</td> <td>↖</td> <td></td> </tr> <tr> <td></td> <td>SAV R-085 115.95</td> <td></td> </tr> </table>				800	2000	SELER SAV (21.5)	↑	↖			SAV R-085 115.95					
800	2000	SELER SAV (21.5)															
↑	↖																
	SAV R-085 115.95																
	<table border="1"> <tr> <td>2000</td> <td>085°</td> <td>2000</td> <td>HILTU SAV (25.8)</td> </tr> <tr> <td>Procedure Turn NA</td> <td></td> <td></td> <td></td> </tr> <tr> <td>12 NM</td> <td>9.5 NM</td> <td>4.3 NM</td> <td></td> </tr> </table>				2000	085°	2000	HILTU SAV (25.8)	Procedure Turn NA				12 NM	9.5 NM	4.3 NM		
2000	085°	2000	HILTU SAV (25.8)														
Procedure Turn NA																	
12 NM	9.5 NM	4.3 NM															
CATEGORY	A	B	C	D	FAF to MAP 4.3 NM												
CIRCLING	800-1 781 (800-1)	800-1¼ 781 (800-1¼)	800-2¼ 781 (800-2¼)	800-2½ 781 (800-2½)	Knots	60	90	120	150	180							
					Min:Sec	4:18	2:52	2:09	1:43	1:26							