

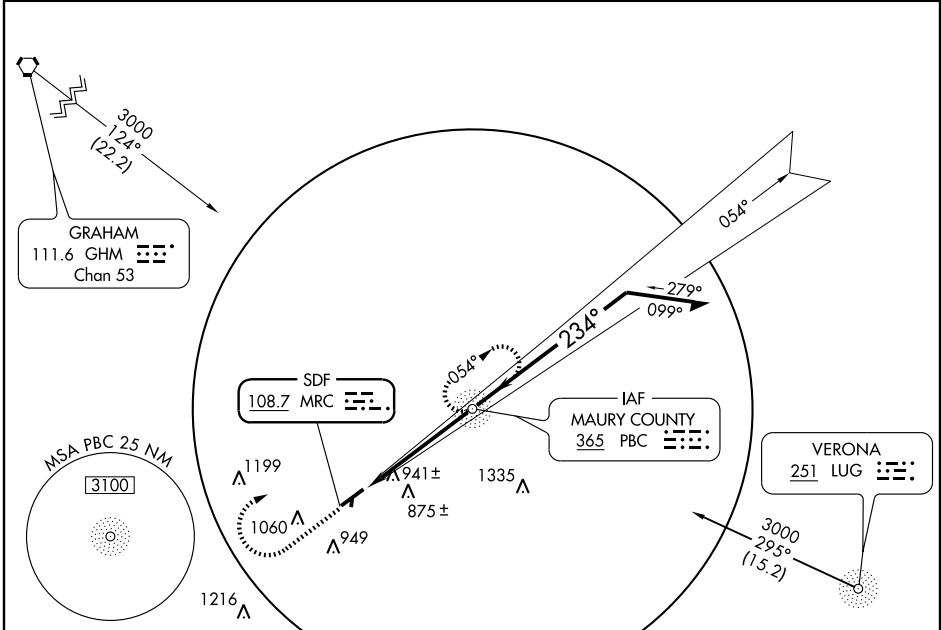
SDF MRC	APP CRS	Rwy Idg	5999
108.7	234°	TDZE	677
		Apt Elev	681

SDF RWY 24

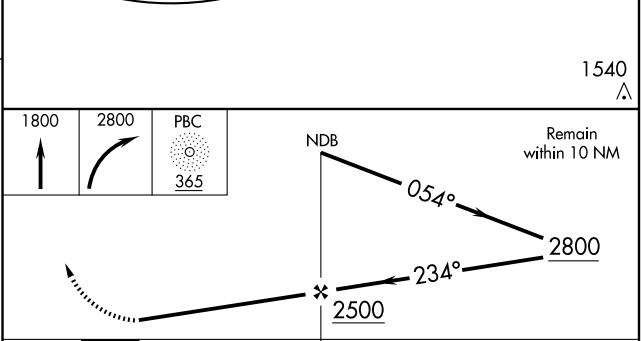
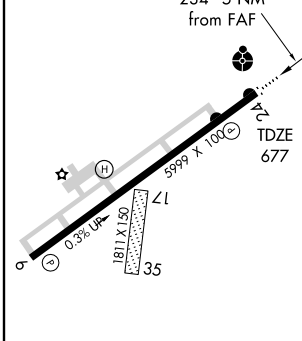
COLUMBIA/ MAURY COUNTY (MRC)

<p>NA If local altimeter setting not received, use Nashville altimeter setting and increase all MDAs 200 feet. Inoperative table does not apply to Cat C. ADF REQUIRED</p>	<p>ODALS</p>	<p>MISSED APPROACH: Climb to 1800 then climbing right turn to 2800 direct PBC NDB and hold.</p>

AWOS-3 128.625	MEMPHIS CENTER 125.85 381.4	UNICOM 122.8 (CTAF) 0
--------------------------	---------------------------------------	---------------------------------



ELEV	681
------	------------



MIRL Rwy 6-24
REIL Rwys 6 and 24

FAF to MAP 5 NM					
Knots	60	90	120	150	180
Min:Sec	5:00	3:20	2:30	2:00	1:40

CATEGORY	A	B	C	D
S-24	1160-3/4	483 (500-3/4)	1160-1 1/4 483 (500-1 1/4)	1160-1 1/2 483 (500-1 1/2)
CIRCLING	1280-1	603 (700-1)	1360-2 683 (700-2)	1360-2 1/4 683 (700-2 1/4)

SE-1, 22 OCT 2009 to 19 NOV 2009

SE-1, 22 OCT 2009 to 19 NOV 2009